



Phocus by Hasselblad User Manual

V16

phocus[®]
BY HASSELBLAD

Welcome to Phocus

It is our hope that you will open Phocus, take a look around, and be inspired to get to work with an imaging workflow that develops according to the way you want things to happen.



Uncompromising Image Quality

The Phocus RAW processor provides the ultimate in processing quality for Hasselblad digital images, including:

- Digital lens corrections for color aberration, distortion and vignetting (DAC I, II, and III)
- Hasselblad Natural Color Solution (HNCS) for perfect colors
- Moiré removal directly upon raw data, preserving image detail

Phocus for Mac supports standard file formats such as TIFF, JPEG, DNG and PNG while Phocus for Windows supports TIFF and JPEG (see File Support section for full details and Hasselblad website for updates). Phocus for Mac also supports files from more than 150 cameras, including Canon, Nikon, Leica, Sony, Fuji, Olympus, etc.

Perfect Viewing Quality

The Viewer uses all the advanced features contained in Phocus to deliver image viewing quality that matches every detail of what you will see later in your chosen image editing program if you wish to edit further. In addition, the Phocus Viewer allows you to customize layout and composition to suit your current or desired workflow, providing a wide range of options including full view, compare, browse, horizontal, or vertical view, and so on. You can have multiple folders open simultaneously for side-by-side viewing, comparison, and selection.

Camera Controls

Phocus also provides special extended controls with which to operate a Hasselblad camera. These features, such as live video for easier photo shoots and workflow, or the ability to control the focus when the camera is in a remote position or when the digital capture unit is mounted on a view camera, bring an entirely new level of flexibility to the way you shoot. Add to that the Phocus Mobile application for iPhone / iPod and iPads and you have the ultimate in remote control and shared viewing.

Flexible Workflow

Phocus features easy-to-use options that allow you to customize your set-up to suit a range of different workflow situations— simple or advanced. Multiple folders can be open at the same time, while Quick Collection folders make handling your choices simple and easy. Image export to a number of file formats combined with pre-setting of options. Customized workflow layouts can be edited, saved, exported and imported to ensure continuity of workflow across different workstations. For added choice, Phocus Mobile sets you free from being right behind the camera while Phocus Quick offers super fast JPEGs for almost immediate sorting, handling and distribution for rush jobs.

Metadata

The basic metadata architecture in Phocus follows the IPTC Core standard with XMP. Working with Hasselblad 3F raw files, the extended metadata architecture available provides for detailed and accurate image adjustment, cataloging and indexing, providing extra benefits such as:

1. Extensive and easy overview of file information and its adjustment history.
2. All settings with regards to capture, angle, equipment, extensions etc. are stored as metadata directly in the image file for full interaction with Digital Lens Corrections (DAC).
3. The Hasselblad GPS accessory allows for a range of new functions within Phocus, as it links GPS data directly to Google Earth, making geographic reference a snap and image storage and retrieval much easier. Exported TIFFs and large JPEGs will carry most of this capture information available for further post processing and archiving.

Leading Edge Moiré Removal Technology

With Phocus, the moiré that can occur on even extremely high resolution Hasselblad images is effectively removed in most cases. Moiré removal is automatically performed directly on the raw data, leaving image quality intact and eliminating the need to carry out special masking selections or other manual procedures, saving hours of tedious post-production work. The moiré tool works with Hasselblad raw files only.

Compatibility

Phocus runs on Macintosh and Windows platforms that use recent operative systems. All FireWire based Hasselblad camera units are supported. Please check the Phocus Read-Me notes for details, requirements and restrictions.

Computer configuration recommendations

Medium-format image file editing requires a moderate amount of processing power from a computer to ensure smooth and rapid workflow. Please check the Read Me files for recommendations about hardware, graphics cards, memory requirements and configurations etc., to obtain the optimum performance from Phocus.

Integration of self-calibrating Eizo displays

Calibration of these displays can be carried out directly from Phocus. This ensures that the display is set up to provide the best possible viewing results of Hasselblad images. If an eligible monitor is connected, Phocus will automatically display a dialog concerning calibration. If you choose to go ahead you will be guided to an extra Eizo tab in the Preferences window where it is possible to set up calibration options and start the process. This preference tab will also let you toggle whether Phocus should handle calibration or not.

It should be noted, however, that it is not currently possible to make a seamless integration with calibrations made by Eizo's own ColorNavigator software. Therefore once you have made a calibration using Phocus, launching ColorNavigator will switch the display back to the last calibration made by itself. When you switch back to running Phocus you will be prompted about this change and will be offered the opportunity of restoring the calibration made by Phocus or, alternatively, disallow the handling of calibration from Phocus. As just running the ColorNavigator Agent will cause interference it is recommended that you switch off the option in the ColorNavigator preferences dialog.

The calibration target chosen by Phocus will of course be optimized to work with Hasselblad RGB and Hasselblad L* RGB working spaces but it should be noted that the resulting calibration will also work well even when using a somewhat smaller working space such as Adobe RGB in Photoshop. However, if you routinely view images in much smaller working spaces such as sRGB you should make a special calibration for this purpose using the Eizo Color Navigator software.

.....

Updates

Phocus, in line with any Hasselblad product, is continually reviewed. Please occasionally check on the Hasselblad website—www.hasselblad.com—for news as well as the latest updates.

About this manual

This manual describes the workings of Phocus (Mac/Windows UK versions from version 2.7.1 or earlier) and how to use it on Macintosh and Windows platforms. The graphical user interfaces are very similar in appearance so the illustrations are based mainly on Macintosh screen captures with additional Windows captures where necessary. Likewise, the operative procedures are almost identical across the two platforms, with the largest difference being shortcuts. Again, these are illustrated and explained where necessary. Shortcuts are indicated by **red text and symbols for Macintosh** users and **blue text and symbols for Windows** users. Some actions require a right click with a two-button mouse. On Mac platforms this can also be achieved by holding the down the Ctrl key while clicking with a one-button mouse.

The manual is purposefully aimed at experienced photographers, rather than beginners, who are committed to exploiting the tremendous opportunities of professional level digital photography. It is assumed, therefore, that the reader already has a reasonable amount of proficiency in working on a computer and working with image editing software. Concepts such as menu structures, file systems, file storage, tools, etc, should be familiar. It is also assumed that certain digital photographic concepts such as color correction, sharpening, curves etc., are also familiar. In that way, the manual acts more as an informational source to specifically support the elements and building blocks of Phocus, rather than a step-by-step guide through image editing generalities. For non cover-to-cover readers, some information is purposefully repeated and appears on several pages.

We encourage you to explore and discover the tremendous possibilities that Phocus offers. The philosophy of the program does not follow a fixed workflow or methodology. It is you who decides how to exploit the most from it, using customization and presets to create a personalized working environment. It is you who picks the tools and fine-tunes methods to get the most out of your images.

You are recommended therefore to have the manual at hand in the early stages to ensure that you are taking advantage of what Phocus can offer. Old habits might hinder your progress towards the optimum in workflow and results, so occasionally dip into this manual to ensure you have everything that you need at your fingertips.

Please be sure to read the 'Read Me' files that accompany a Phocus download for the latest updated information.

Visit the Hasselblad website – www.hasselblad.com – for details about other Phocus related products:

Phocus Quick
&
Phocus Mobile

File Support



nef cr2 mos
dng tiff jpeg

etc.

3fr

3f

Phocus primarily fully supports Hasselblad 3FR and 3F files with more limited support for other format files. The Mac platform allows file viewing and limited editing of not only TIFF, JPEG, DNG and PNG files for example, but also more than 150 third-party digital cameras, including Canon, Nikon, Leaf, Leica, Sony, Fuji, Olympus etc. The Windows platform supports TIFF and JPEG files.

Hasselblad raw files can also be processed with other selected software applications, namely, Adobe Camera Raw / Lightroom and Apple Aperture. Note, however, that using Phocus is the most comprehensive method. The Phocus and Adobe methods can produce almost identical results (in most cases) regarding RAW conversion so it is a matter of personal choice regarding which method would best suit your preferred workflow. Alternatively you can use Apple Aperture though you should take note that the benefits of DAC and HNCS etc, will be lost in this case. Please check the Phocus Read-Me and our web page for updated information.

3FR: These files are a result of captures stored on CF cards generated by untethered Hasselblad equipment. They are visible as 3FR badged thumbnails and remain as such until selected and 'imported' where they then become 3F files.

3F: These files are a result of either captures generated by tethered Hasselblad equipment or as a result of 3FR files being processed to completion within Phocus. 3F files do not have to be 'imported' and can be adjusted and exported immediately. Exported 3F files include integrated metadata.



To sum up, capture files can be stored as 3FR files (from a CF card) for later processing in Phocus or other software, or they can be stored as 3F files (as a result of tethered shooting or 3FR files processed and converted in Phocus). In all cases if you keep the original 3FR/3F files, you will also retain the possibility of reprocessing them in the future in later versions of Phocus or other software to take advantage of eventual improvements and developments.

Other (Mac only): This group comprises a list of various formats, both raw and non-raw, proprietary and general. These files are initially read and processed via the integral Macintosh OS X support before they are adopted by Phocus. This means the contents of a folder containing a mix of image-format files can be viewed in its entirety in Phocus.

As these files can contain data that is written differently to Hasselblad files, there can therefore be a restriction on the effect that tools in Phocus could have. In practice this means you should expect the following tools to be inactive: *Highlight recovery, Shadow fill, Clarity, Lens corrections, Noise reduction* and *Scene calibration*.

However, other tools can be freely used and in order to retain the adjustments, so called *sidecar* files are created. These are separate files that contain the necessary data that any following application needs to reconstruct the image the way you intended in Phocus. The files use the same name or designation that the original raw file had but to distinguish them from the originals, the sidecar files acquire a new suffix: *.phos*. These sidecar files are automatically stored in the same folder as the original files. The important point to remember here is that when transferring any non-Hasselblad files that have been adjusted in Phocus to another folder, to another computer or to an external storage medium, you must remember to include the sidecar files too. Otherwise all the changes and corrections you made in Phocus will be lost until you re-unite them. When moving or copying files inside Phocus, however, the sidecar files are automatically copied with the raw file.

Be aware that initial previews of third party raw files might reflect the consequences of processing according to the manufacturer's standards. This would be particularly noticeable in regard to curve and color renditions. So, for every adjusted or exported file, Phocus creates and stores individual preview files in the *Preview Cache* folder that resides in the Phocus Application support folder.

Though not necessarily normal workflow practice, adjustments can also be made on non-raw files if desired.

Please note:

- *Image files from all Hasselblad FireWire based digital camera products are supported.*
- *Tethered operation works with all Hasselblad FireWire based digital camera products except for the first generation Ixpress series.*
- *Capture of micro-step images (multi-shot) is not supported.*
- *Scanner 3F files are not supported.*
- *3F files generated by Phocus are not backward compatible with FlexColor.*

Contents

Welcome	3	Thumbnail options menu	25
About this manual	4	Selection	26
File Support	5	Tabbed folders	26
Contents	7	Options menu	26
Getting Started	9	Thumbnail badges	26
Light Mode - overview	11	Viewer	29
Standard Mode - basic overview	12	Layout	29
Slideshow	13	Resizing	29
Print	14	Viewer Toolbar	30
Export	15	Compare view	30
Layout overview	17	Crop tool	30
General description	17	Straighten tool	30
File Browser	21	Neutralization tool	30
Layout	21	Zoom tool	30
Navigation	21	Hand tool	31
Phocus Captures	22	Shadow warning	31
Favorites	22	Highlight warning	31
Collections	22	Grid	31
Quick collections	22	Overlay	31
File System	22	Previous image	32
Devices	22	Next image	32
Thumbnail Browser	24	Switch compare images	32
Layout	24	Color info	32
Resizing	24	Tethered Capture	34
Renaming, relocating and rating (IAA)	24	Connection	34
Viewing, filtering and sorting	25	Capture	34
		Live Video	35
		H & V systems	35
		Focus checking	36
		Tool Area	38
		Tabs	39
		Tools	39
		Tool settings	39
		Tool presets	40
		Presets - general	42

Tool List 43

Adjustments Browser	43
Camera	43
Capture Info	43
Capture Sequencer	43
Color Correction	43
Crop & Orientation	44
Curves	44
Dust removal	45
Exposure	45
Grayscale	45
Histogram	45
IPTC Core	46
IPTC Keywords	46
Job Info	46
Lens Corrections	49
Navigator & Zoom	49
Noise Filter	49
Output Preview	50
Queue	50
Reproduction	50
Scene calibration	51
Sharpness	51
White Balance	52

Toolbar 53

Capture	54
Export	54
Export New Images Automatically	55
Import & Export tips	56
Import	57
Modify	57
Delete	57
Print	57
Preferences	59
Triggers	59

Mobile	60
Layout options on toolbar	61
Portrait/Landscape	61
Show	61
Layouts	61
Working with layouts	62
Adjustments	63

Menu 71

Menu shortcuts	71
----------------	----

Appendix 76

Camera Configurator	77
Eizo Monitor Calibration	78
Integrated Colour Calibration	79
Keyboard shortcuts	81
FAQ	82
Index	85

Modifier key symbols for shortcuts

Macintosh

⌘ = Command

⌥ = Alt

⌘ = Control

⇧ = Shift

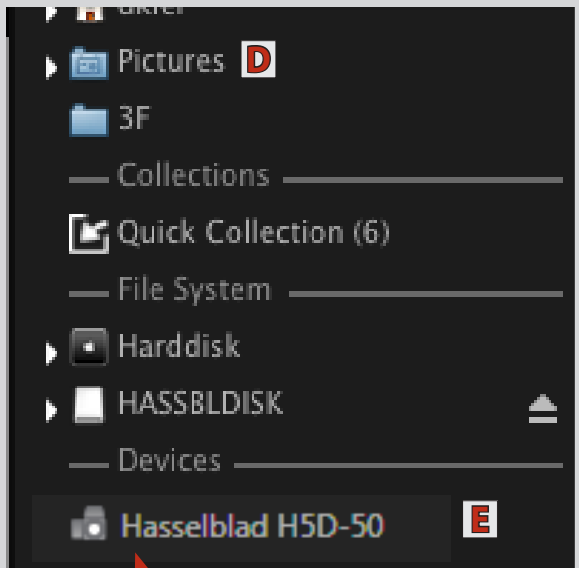
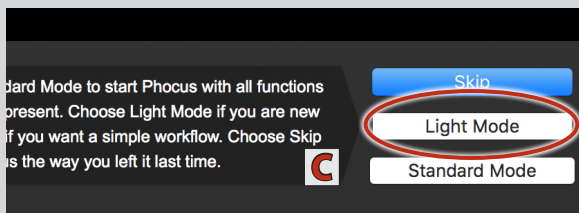
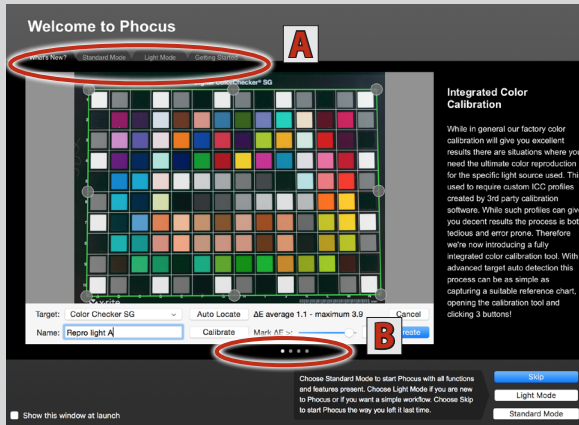
Windows

⇧ = Shift

Getting Started

The following is an introduction to the structure and workings of Phocus and what it can offer.

Getting Started



Folders, cameras, card readers, memory sticks, hard drives, Quick Collections etc. containing captures appear in the File Browser. Clicking these will reveal their contents in the Thumbnail Browser.

The Phocus DVD contains the application, user manual, video tutorial, sample images and *Read me* files. After installation, you will be asked to register your copy of Phocus and you will also be able to choose whether you would like to be sent e-mails regarding software and firmware updates as well as general information about Hasselblad.

After launching, a welcome dialog presents four tabs **A** that offer a variety of information. *What's New*, for example, provides an overview of the latest improvements in Phocus while the other tabs contain more specific information and/or access to further help and information such as tutorials etc. Click on the buttons **B** to access the various pages under each tab heading.

The lower right corner of the welcome dialog provides initial choices regarding in which mode (amount of tools and functions available etc.) you wish to start Phocus:

Skip opens Phocus in the mode it was when last closed.

Light Mode **C** is for those new to Phocus.

Standard Mode provides all features and functions and is intended for regular users.

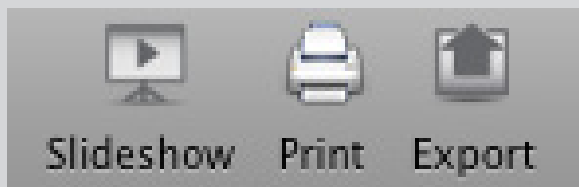
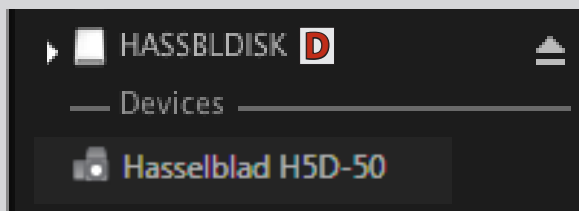
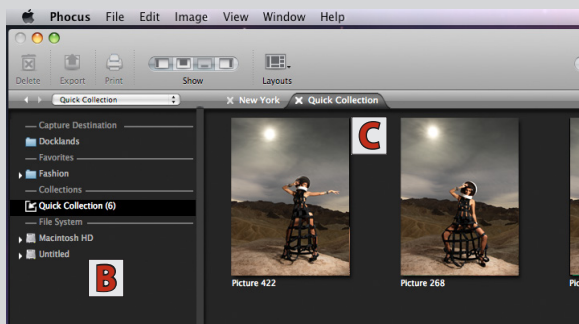
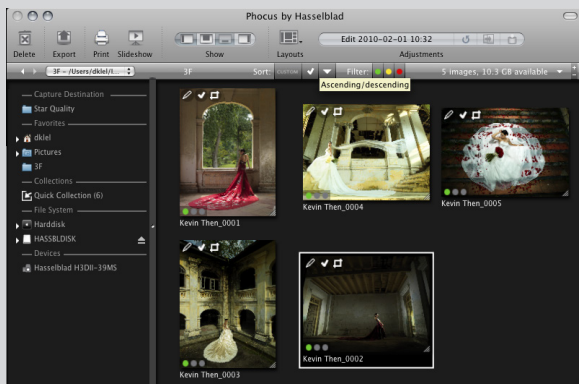
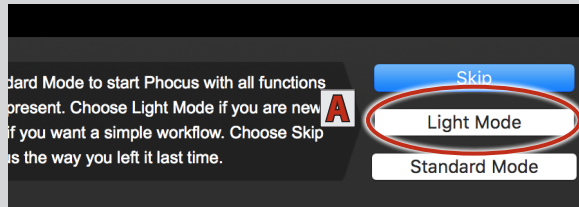
Note that you can configure a favored layout later on as layout/tool/preset combinations (default or custom) are always accessible at any time in Phocus via *Layouts*.

— • —

File Destination: When opened for the first time, Phocus automatically creates a file-destination folder called *Phocus Captures*, located in the *Pictures* **D** folder on the hard drive, where images shot tethered (with the camera connected) will be stored. Imported images from a CF-card will be located in the destination folder you chose during the import process.

File Source: Captures can be imported from a CF card in a reader or directly from a camera in tethered mode. When connecting a Hasselblad camera it will show up under *Devices* in the *File Browser* **E**. When working tethered to a Hasselblad camera, all images are captured to the current destination folder and displayed in the *Thumbnail Browser* and *Viewer*.

Light Mode – basic overview



Light Mode provides just the basics of Phocus. Captures can be imported, processed, viewed, saved or even printed in minutes. This mode is intended for use where no custom adjustments are required.

However, Phocus can be expanded at any time providing access to all tools in conjunction with a number of predetermined layouts. Just click on the *Layouts* icon on the *Toolbar* (description follows this section).

Start up

From the welcome screen, choose *Light Mode* **A**.

Import

Connect a Hasselblad camera or a card reader to import captures stored on a card (if you want to import files via a card reader you can use whichever port—FireWire or USB—is supported by the card reader). Hasselblad equipment can be connected (tethered) to a computer FireWire port for direct capture import and direct selection without needing to use a card reader.

File Localization

Captures, whether from a CF-card or from a tethered camera are imported automatically. See previous section for details.

File Browsing

Light Mode will display the *File Browser* **B** on the left. Tethered captures and card reader content will appear automatically in the *Thumbnail Browser* **C**.

Otherwise, click on the relevant capture storage symbol (camera/hard disk/memory card or stick) such as **D**, for example, to reveal the folder contents as thumbnails in the *Thumbnail Browser*.

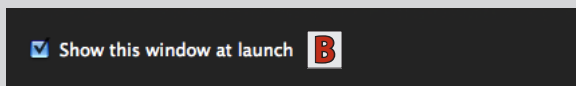
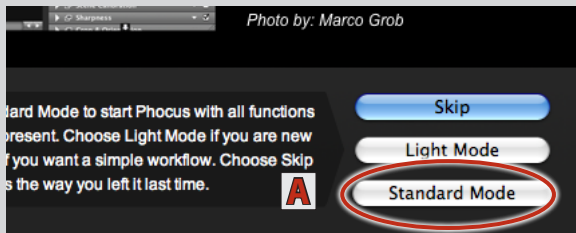
Basic Options

With the thumbnails visible, you can now make a selection of the desired image files by clicking on them (Shift click for contiguous multiple selection or Cmd/Ctrl click for multiple individual selection). A selected image displays a white border surrounding it. You can choose between several options that provide immediate and automated actions regarding the selected images:

- **Slideshow** - displays selected files.
- **Print** - prints selected files.
- **Export** - saves selected files in the format of your choice to a folder for storage or use on another computer or image editing application.

See the following pages in this chapter for further details.

Standard Mode – basic overview



Note

- 3FR thumbnails represent untethered Hasselblad/CF-card stored files and require importing into 3F files to be able to view them in detail. You can, however, print and export 3FR files directly without importing them if required
- 3F thumbnails do not need processing. They are generated either directly from tethered captures or from imported 3FR files.



- The Mac version of Phocus supports a variety of other raw formats as well as JPEG, DNG, TIFF. See File Support section for more information.

Standard mode provides the complete range of tools and facilities that Phocus offers. This mode is intended for use where custom adjustment of individual files and customized batch processing is required.

Refer back to the *Getting Started* and *Light Mode* pages for basics and further on for specific *Standard Mode* details.

Start up

From the welcome screen, choose *Standard Mode A*, to start Phocus with all tools, choices and functions available. (Check off *Show this windows at launch B* if you do not wish to see the screen the next time you launch Phocus). The *Welcome* dialog is at all times available via the *Help* menu inside of Phocus.

Standard Mode will display the *File Browser C* on the left, *Tools D* on the right, the *Viewer E* in the middle with *Thumbnails F* below.

Import

Connect a Hasselblad camera (FireWire) or a card reader (FireWire or USB) to import captures stored on a card. Hasselblad equipment can be connected (tethered) to a computer FireWire port for direct capture import and direct selection without needing to use a card reader.

File localization

Images, whether from a CF-card or from a tethered camera are displayed automatically in Phocus. See previous section for details.

File Browsing

Tethered captures and card reader content will appear automatically in the *Thumbnail Browser*. Otherwise, click on the appropriate capture storage symbol (camera/hard disk/memory stick) to reveal the folder contents as thumbnails in the *Thumbnail Browser*.

Adjustments

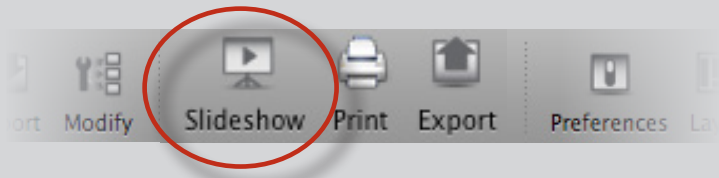
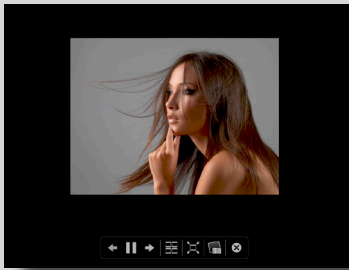
Click on thumbnails to make them appear in the *Viewer* where they can be adjusted (3FR files must be selected first and then processed by clicking on *Import G*).

Select the required tools from the four tabbed tool collections *D* and make the desired adjustments.

Basic Options

Refer back to *Light Mode* description concerning *Slide-show*, *Print* and *Export* possibilities.

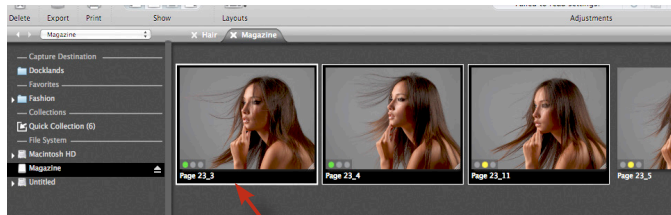
Slideshow (Light & Standard Modes)



The **Slideshow** feature produces an easy-to-use, full screen display in seconds.

1. In the **Thumbnail Browser**, select the files you want to display in **Slideshow**.

All supported files (see **File Support** section for further details) will work, except for non-imported Hasselblad 3FR files.



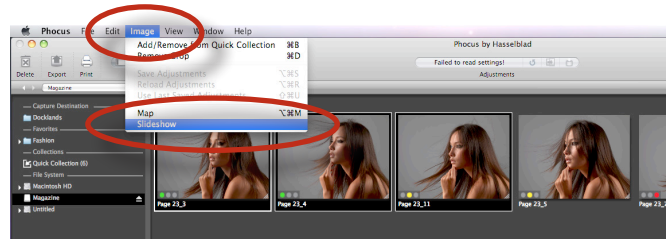
Thumbnails bordered with white show they have been selected for inclusion in the slideshow.

2. Click the **Slideshow** icon in the toolbar or choose **Slideshow** via the Image menu.

Mac

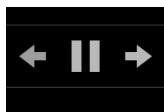
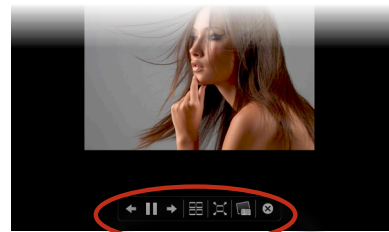


Windows



Additional functions on Mac platforms.

1. Select required action from control panel.



Back, play/pause, next



Index sheet. Mouse over file for information. Select any file to revert.



Fit to screen or Actual size. Toggle function.

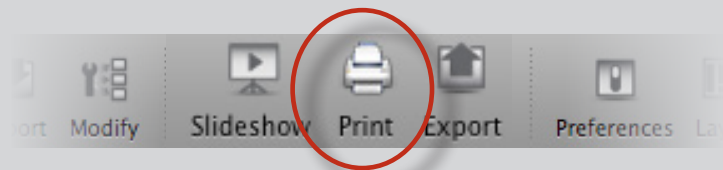
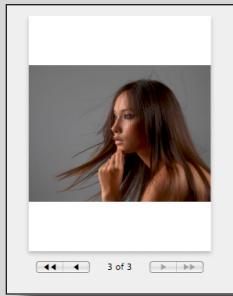


Adds selected file directly to iPhoto collection.



Stop button (or use Escape button).

Print (Light & Standard Modes)



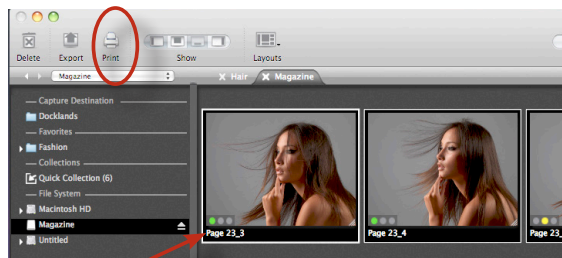
The **Print** feature offers high resolution direct print capabilities plus contact sheet creation. It includes features such as orientation, scaling, output size, color management, layout choice, etc..

1. In the thumbnail browser, select the files you want to print then either:

- click the **Print** icon in the toolbar
- choose **Print** via the **File** menu
- use the shortcuts:

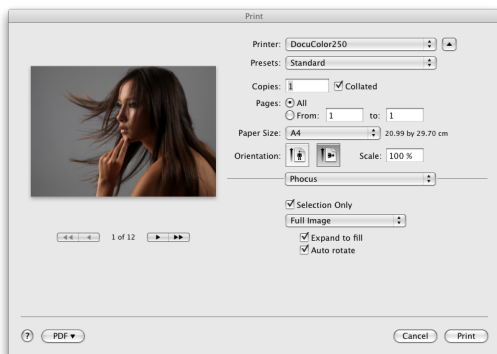


Any of these reveals the Print dialog box.



Thumbnails bordered with white show they have been selected.

Full image prints

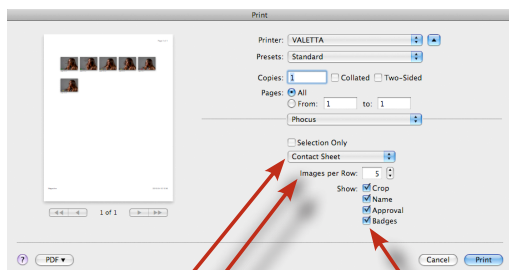


2. The dialog allows several choices. Print quality is automatically full resolution. Even 3FR files can be printed directly without processing to 3F files first.

Check **Full image** to select optimum coverage of print medium. Check **Auto rotate** to set the correct orientation. You can also select next or previous image(s) here.

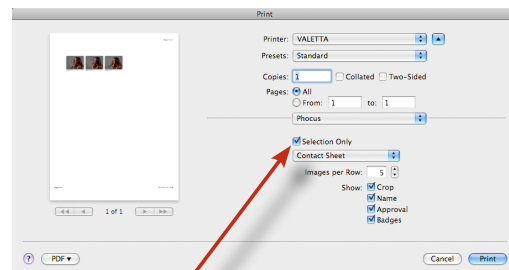
See later section for further information about more possibilities.

Contact sheets



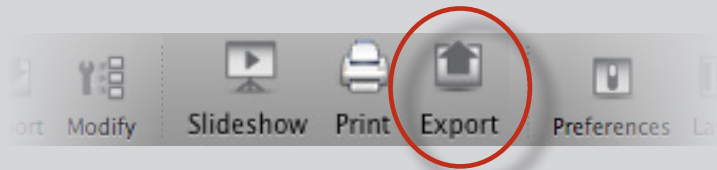
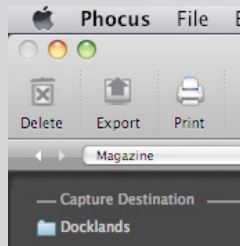
1. Check **Contact Sheet**. Select the required layout in **Images per Row**.

Check boxes to include information.



2. Check **Selection Only** to print the original choice. Leave unchecked to print all images in folder.

Export (Light & Standard Modes)



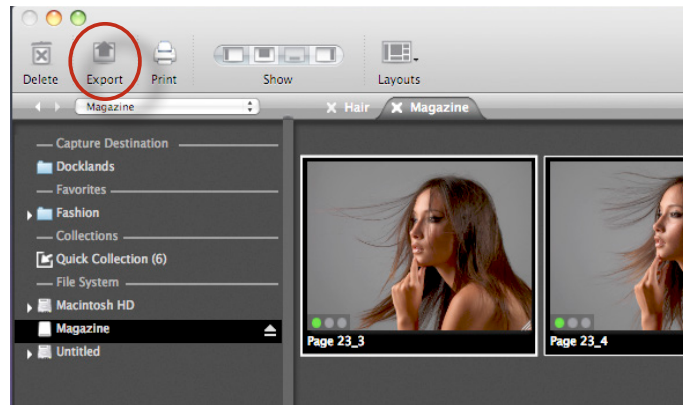
Export allows you to export (convert) images into a variety of file formats such as JPEG, TIFF, DNG etc. It also offers simultaneous export of extra copies in the same or another file format.

1. In the **Thumbnail Browser**, select the files you want to export then either:

- click the **Export** icon in the toolbar
- choose **Export** via the **File** menu
- use the shortcuts:



Any of these reveals the **Export** dialog box.

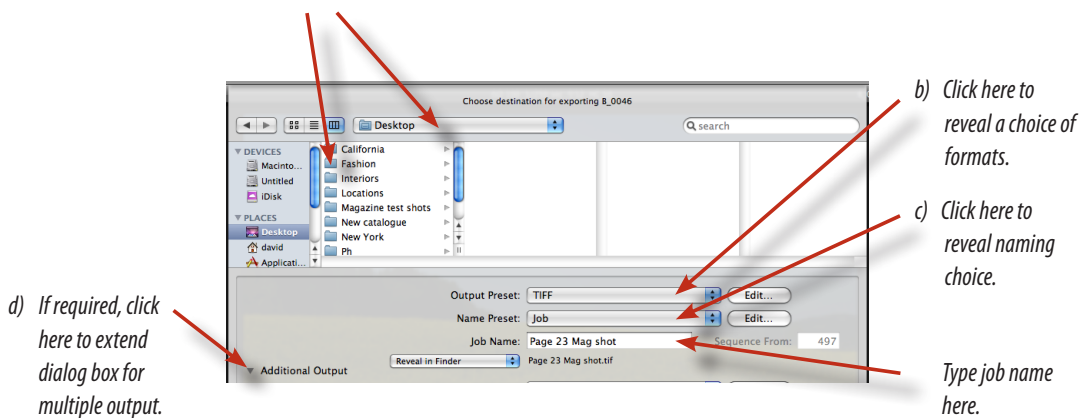


Thumbnails bordered with white show they have been selected.

2. The **Export** dialog provides several choices:

- a) Where you want the exported file(s) to be stored.
- b) What types of file(s) you want.
- c) What type of naming you want the file(s) to have.
- d) Multiple output.

a) Choose file destination in conventional manner.



(See **Adjustments** section for full details about choices)

Layout Overview

Phocus is designed to be customized to suit your individual workflow.

The following is an overview of layout possibilities.

Layout overview

This illustration highlights and describes the main areas as referred to in this manual.

Please note this is just an example of one layout possibility. Layouts and content can be changed at any time.

File Browser

Lists the information concerning destination folders, storage folders, collections, hard disks and devices.

Menu

Includes **View**, **Window** and **Help** for Phocus specific options.

Toolbar

Accesses a variety of tools. Can be customized to suit your needs.



Viewer

Displays the image selected in the **Thumbnail Browser**. A separate **Viewer** can be created for dual-monitor use, for example. **Viewer** image size can be changed in size and position.

Viewer Toolbar

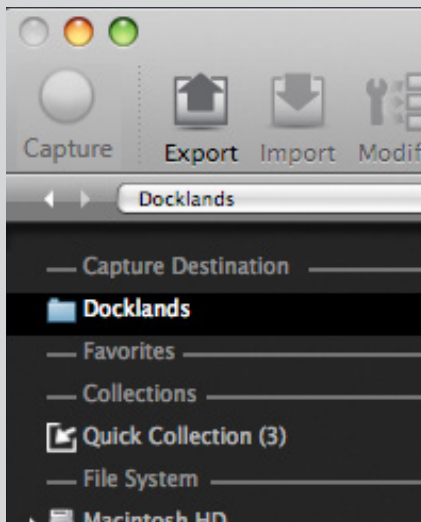
Accesses a variety of tools specifically assigned to the **Viewer** area only.

Thumbnail Browser

Displays thumbnail views of selected folder content. Placing in layout can be changed. Images can be re-sized and sorted.

Tool Area

Groups sets of tools under four main tab headings. These individual sets can also be customized to include any combination of tools. Individual tools can be floated to anywhere on the screen.



⌘+⌘+B
Ctrl+⬆+B

The following is a more detailed description of the main areas. Some shortcuts are mentioned but not all. See relevant sections for further information. There is a complete list of keyboard shortcuts towards the end of this manual.

File Browser

The *File Browser* (not to be confused with the *Browse* tool tab) consists of *Capture Destination*, *Favorites*, *Collections*, *File System* and *Devices*.

It lists all the storage locations under one heading. It can be made narrower by dragging the divider to the left. It can be hidden to increase the viewing area, for example, by using the commands mentioned here. Note that it cannot be placed anywhere else but on the left hand side of the layout.

1. **Menu > Window > Hide Browser** - expands area for *Viewer* and the *Thumbnail Browser* displays. Toggle function.
2. **Menu > Layouts** hides and shows *Browser* depending on choice.

Viewer

The *Viewer* is the main area for image checking. A *Viewer Toolbar* runs along the bottom of the *Viewer* in all layouts. The view's size can be changed by dragging the *Viewer Toolbar* up and down in the default (Landscape) layout. In Portrait mode the divider can be dragged to the left or right to change size also.

⌘+⌘+V
Ctrl+⬆+V
⌘+⬆+⌘+V
Ctrl+⬆+Alt+V
⬆+⌘+F
⬆+Ctrl+F

1. **Menu > Window > Hide Viewer** - expands area for *Thumbnail* displays. Toggle function.
2. **Viewer in Separate Window** - creates a separate window for the *Viewer*.
3. **Full Screen Viewer** - fills the screen with *Viewer* and *Viewer Toolbar*. Toggle back or press *ESCAPE* button to exit full screen mode.
4. **Menu > Layouts** hides and shows *Viewer* depending on choice.

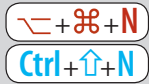
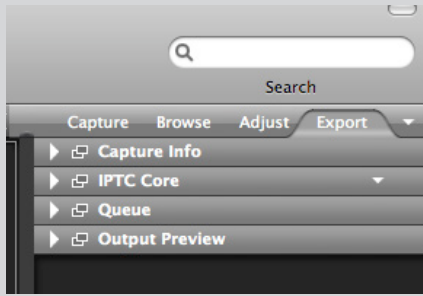
Tip
Option click a tab head to trigger a customized preset change to the main layout. See Preferences for details.

⌘+⌘+T
Ctrl+⬆+T

Tool Area

The *Tool Area* consists of four tabs: *Capture*, *Browse*, *Adjust* and *Export*. Each of these tabs can be customized for content.

1. **Menu > Window > Hide Tools** - expands area for *Viewer* and *Thumbnail* displays. Toggle function.
2. **Menu > Window > Layout** hides and shows *Tools* depending on choice.



If you want to customize a tab, click on it to bring it to the front. Click on the tool you want to move and use any of the following procedures:

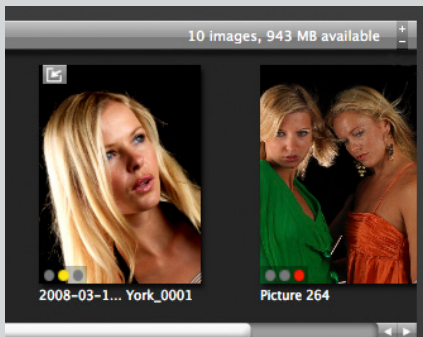
- Drag and drop any tool to another position on the list.
- Drag and drop any tool to anywhere outside of the Tool Area to remove it.
- Click the float icon to close the tool on the list and create a floating tool in the Viewer.
- Click the right hand menu triangle on the tab header to reveal a list of tools. Clicking on a tool will add it to the selected tab. A default tool set is also a choice.
- Some tools have a disclosure triangle on the tool header to reveal further options and a check box for activation.

Any tab can contain any or all tools!

Thumbnail Browser

The **Thumbnail Browser** can be located beneath the **Viewer**, to the left of the **Viewer**, or replace the **Viewer** so that it fills the central area.

1. **Menu > Window > Thumbnails** expands area for **Viewer** displays. Toggle function.
2. **Menu > Layouts** hides and shows **Thumbnails** depending on choice.



Layouts can be configured to speed up workflow and facilitate certain actions. For example, you might prefer the very simplified **Light** layout for fast checking and exportation and another layout complete with specific settings for individual image adjustments.

Layouts can be changed by the options on the **Toolbar**. Your own customized layouts can be saved/edited by **Toolbar > Layouts > Edit**.

In the menu **Phocus > Preferences**, layouts can also be assigned to trigger specific actions, such as when connecting a camera, for example.

Later sections in this manual take up each tool individually as well as some expanded sections for descriptions in greater detail of various aspects.

File Browser

The File Browser lists all the storage locations under one heading and consists of Capture Destination, Favorites, Collections, File System and Devices.



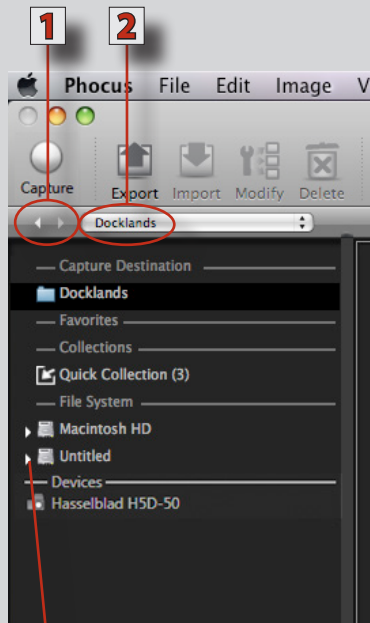
File Browser

SHORTCUT

Show/Hide

⌘ + ⌘ + B

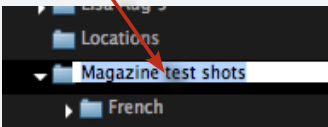
⬆ + Ctrl + B



3

Tip

Click on a folder name to edit it.



Tip

Double click folders to expand or collapse them.

The *File Browser* provides easy access to your complete file system and directly links to convenient image folders such as: *Capture Destination*, *Favorites* and *Collections*. A right click in the *File Browser* opens a menu with command options for: *Add to Favorites*, *Use as Capture Destination*, *Reveal in Finder*, *New Folder*. Any folder name can be edited by clicking on the name itself, though volume names cannot be changed.

Layout

The view can be made narrower or wider or it can be hidden completely:

- Drag the divider to the left or right to alter the width of the view.
- Choose *Menu > Window > Show / Hide Browser* (or use shortcut).

Note, though, that the *File Browser* cannot be located anywhere else but on the left hand side of the layout.

Navigation

- Click on the arrows **1** on the header bar to navigate through recent folders. The folder name appears in the *File Browser* menu **2**.
- Click on the *File Browser* menu to reveal all folders. Click on a folder to display contents in the *Thumbnail Browser*.
- Click on the disclosure triangles **3** to successively navigate to the desired folder. Click on the folder to display contents in the *Thumbnail Browser*.

List of files

Capture Destination: Contains the folders that store imported or saved captures.

When Phocus is launched for the first time, a *Phocus Captures* folder is automatically created and appears on the desktop, by default. This folder becomes the automatic destination folder for all captures whether they are imported from a CF-card or directly from a tethered camera, until you choose otherwise.

You can access the *Phocus Captures* folder in the *File Browser* panel under the *Capture Destination* heading. Clicking on the *Phocus Captures* icon will cause the contents to appear in the *Thumbnail Browser*.

Other folders can be created or chosen as destination folders instead of the *Phocus Captures* as follows:

1. Create a new folder and name it.
2. Choose the *File Browser* and navigate down through the menu to the new folder.
3. **Ctrl click / Right click** it to display the pop up menu where you can select *Use as Capture Destination*.

Tip**Add/Remove
Quick Collection**

⌘ + B
Ctrl + B

Press **⌘ + B** / **Ctrl + B** to **ADD** a selected file to a **Quick Collection** from any folder displayed in the **Thumbnail Browser**.

Press **⌘ + B** / **Ctrl + B** to **REMOVE** a selected file from a **Quick Collection** (as well as the **Quick Collection** badge from the original file in the original folder) displayed in the **Thumbnail Browser**.

A file can also be removed from a **Quick Collection folder** by using the **backspace** / **delete** key.

Tip

Notification of any files currently being exported appears at the bottom of the file browser.

Favorites: Contains aliases of frequently used folders. Drag selected folders to just beneath the **Favorites** heading to add them to the list.

Collections: A **Quick Collection** is a compilation of links to images, that you want to keep together for various reasons. For example, it could be the best candidates from several folders kept in one place to present to a client. Files are added to the **Quick Collection** by shortcut or drag and drop to the folder. The figure in brackets displays the number of files in the collection. Click on **Quick Collection** to display contents in the **Thumbnail Browser**.

Thumbnails that have been assigned to a **Quick Collection** acquire a **Quick Collection** icon (📁), whichever folder they are stored in.

Note that **Quick Collection** files are only alias files (shortcuts pertaining to the original files), not duplicate files, so if the original capture is deleted from its own folder then the alias file is automatically deleted from the **Quick Collection** folder too. However, an alias file deleted from the **Quick Collection** will not cause the original file in the capture folder to be deleted.

File System: Provides an overview of the location of your local hard drives or network volumes for accessing folders.

Devices: Shows the connected camera/digital back. Only visible when a device is connected.

Thumbnail Browser

The Thumbnail Browser displays all the images in a selected folder. The layout can be altered while the captures can be re-sized and sorted.



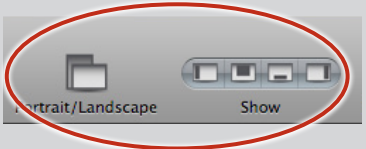
Thumbnail Browser

Shortcut

Show/Hide Thumbnails

⌘ + ⌘ + N

⬆ + Ctrl + N

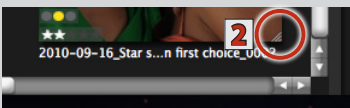
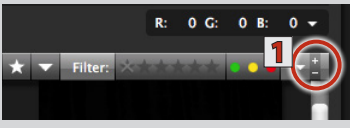


⌘ + ⌘ + N

⬆ + Ctrl + N

⌘ + ⌘ + 4

⬆ + Ctrl + 4



⬆ + ⌘ + +

⬆ + ⌘ + -

⬆ + ⌘ + 0

⬆ + Ctrl + +

⬆ + Ctrl + -

⬆ + Ctrl + 0

Tip

In Thumbnail only view, press ⌘ + 0 / Ctrl + 0 to resize single thumbnails to fit view.

The *Thumbnail Browser* is headed by a bar that amongst other things, names the selected folder, shows how many images are in the selected folder and displays symbols for the various options available etc. See the following page for a full description.

Scroll bars can be displayed on the right and along the bottom of the browser (in both Portrait and Landscape modes) dependent on the size of the thumbnails.

Layout

At the default setting, the *Thumbnail Browser* is located at the bottom of the screen with images running left to right. To change the layout:

- Drag the divider (between the *Thumbnail Browser* and the *Viewer*) up or down (in landscape layout).
- Drag the divider (between the *Thumbnail Browser* and the *Viewer*) to the left or right (in portrait layout).
- Choose *Toolbar > Show*. Rapidly shows or hides the four main areas: *Standard, Browse, Viewer* and *Thumbnail Browser*.
- Choose *Toolbar > Layout*. Changes orientation to portrait to the left of the *Viewer*.
- Choose *Menu > Window > Show / Hide the Thumbnail Browser* or shortcut.
- Choose *Menu > Window > Browse > Layout* or shortcut. Fills area with thumbnails only (no file browser or tools).

Resizing thumbnails

To change the viewing-size of thumbnails:

- Click on the plus or minus signs **1** to enlarge or reduce all the thumbnails in the *Thumbnail Browser*.
- Move the drag handle **2** in bottom right corner of thumbnails. Alters size of all thumbnails globally.
- With an image selected in the *Thumbnail Browser*, press (⬆ + ⌘ + +/-/0) (Ctrl + ⬆ + +/-/0) zoom symbols to enlarge/reduce/fit the viewing size of all thumbnails.

Renaming, relocating, approval rating (IAA) and Star rating

To rename:

- Select name to highlight it for change.

To relocate:

- Drag and drop within the view.

To change approval level rating (IAA) for both 3F and 3FR files before import:

- Select then press - **6** for **Green** / **7** for **Yellow** / **8** for **Red**.

Thumbnail viewing, filtering and sorting

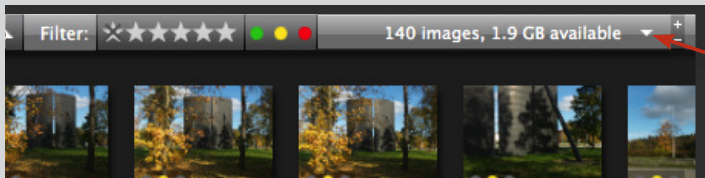
Thumbnails can be rated using either the **IAA** system or the **Star** system or both. **IAA** rating is automatically applied to files at capture with H camera/ CFV back firmware from before 2014 and appears in Phocus. All **IAA** files can be re-rated in Phocus if desired.

Star rating is applied in Phocus only. When applied and embedded at export (this is an option on the Large IPTC list), it will also be accessible and useable in other applications such as *Apple Aperture* and *Adobe Lightroom*.

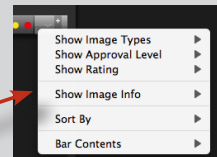
Both rating systems can be exploited for sorting purposes in the **Thumbnail Browser** using different types of filtering.

Rating is applied to selected files by pressing numerical keys on the keyboard as follows:

STAR rating	IAA rating
1 ☆	6 ●
2 ☆ ☆	7 ●
3 ☆ ☆ ☆	8 ●
4 ☆ ☆ ☆ ☆	
5 ☆ ☆ ☆ ☆ ☆	



Click on disclosure triangle to reveal thumbnail options menu.



Thumbnails can be viewed and sorted in a number of ways. Click on the disclosure triangle on the right side of the menu bar to reveal an options menu. Navigate down to the required item for options.

Sort offers a variety of choices.



Click here for name, date or custom filtering.

Ascending or descending sorting

Sort by rating

Sort by name



Sort by date

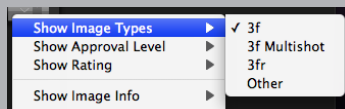
Custom sort

Filter allows you to sort thumbnails by Star or IAA rating filters. Either click on the menu bar for choice or choose from options menu.



Thumbnail options menu

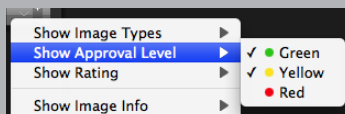
Show Image Types:



Filters the displayed files according to type

For example, checking only **3f** would automatically select the Hasselblad files already imported and disregard all other file types in that particular folder.

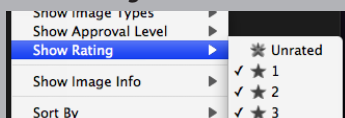
Show Approval Level:



Filters the displayed files according to Approval Level

For example, checking only the **Green** and **Yellow** rating would automatically exclude all **Red** rated files. You can also apply **Approval Level** filtering by clicking the colored buttons on the header bar.

Show Rating:

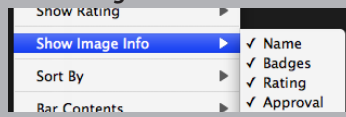


Filters the displayed files according to Star rating

For example, checking only three stars would automatically select only the files you have given a three star rating to. Checking **Unrated** selects all files with no **Star** rating.

Thumbnail options menu

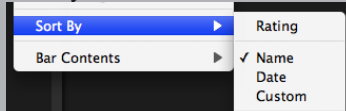
Show Image Info:



Filters the information displayed about the files

For example, checking **Crop** and **Badges** displays the actual crop of the thumbnail as well as the crop badge. Unchecking **Crop** displays the whole of the thumbnail (and badge if still checked).

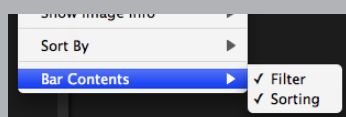
Sort By:



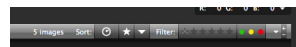
Selects file sorting method

For example, checking **Name** only will temporarily disregard the date or rating of the files. Each choice can then be further filtered by clicking on the **Ascending/Descending** triangle on the header.

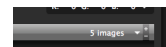
Bar Contents:



Hides/reveals Sort and Filter options on header bar



Filter and Sorting revealed



Filter and Sorting hidden



Selection

Click on a thumbnail to open it in the **Viewer**. If you make multiple selections, you can select which thumbnail to view by either clicking on it or by using the cursor keys.

Tabbed Folders

Cmd / Ctrl clicking a folder in the **File Browser** will create an extra tabbed folder **1** that appears above the **Thumbnail Browser**. This makes it easier and more efficient to manage files when working with several folders at the same time. Click on the X on the tab to close it (the **File Browser** can be closed to free up space for viewing images if required).

Options menu

Ctrl click / Right click thumbnails to open a list **2** of time saving options. Works individually or in multiples.

Thumbnail badges

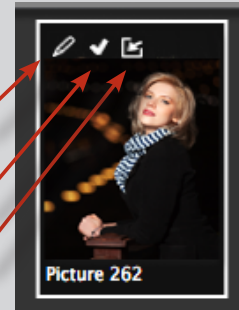
Thumbnails are badged with various appropriate symbols to display the file format, status and/or history. These also appear on the left of the **Viewer** header bar **3** as a reminder when the thumbnail browser is hidden). See next page for examples.

Badge examples

-  3FR file.
-  Multishot file.
-  Quick collection shortcut.
-  File has been exported.
-  File has been edited (and saved).
-  File has been cropped.

Thumbnail example

- File has been edited (and saved)
- File has been exported
- Quick collection



Tip

When in Thumbnails Only view, double click a thumbnail to open it in the Viewer window.

Tip

If you have rated files (IAA, Star or both) and no images are visible (in the Thumbnail Browser or Viewer), then check to see whether you have either the IAA or Star selection filter applied.

Tip

A slideshow function is available for selected (non 3FR) thumbnails. Choose **Menu > Image > Slideshow**. Features: back, next, pause, index sheet, fit to screen and add to iPhoto on the Mac platform.



Viewer

The Viewer displays an enlarged view of images, allowing detailed examination and adjustment of individual images. A Viewer Toolbar is available in the same view.



Viewer

Shortcut

Show/Hide

$\text{⌘} + \text{⌘} + \text{V}$

$\text{⌘} + \text{⌘} + \text{N}$

Tip

When browsing the Thumbnail Browser and the Viewer together, press $\text{⌘} + \text{⌘} + \text{N}$ / $\text{⌘} + \text{⌘} + \text{N}$ to temporarily hide the thumbnails. Toggle back.

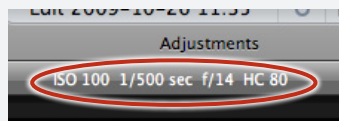
Tip

The top right hand corner of the Viewer displays the current magnification of the image.



Tip

Basic capture information can be read off the viewer bar.



Tip

Hand Tool



- Hold down the spacebar to activate the hand tool when zoomed in to drag Viewer contents around.

Layout

At the default setting, the **Viewer** is located in the middle of the screen above the **Thumbnail Browser** and automatically displays any selected thumbnail. The **Viewer** is headed by a bar naming the selected image. It also displays the approval level, size in percent, basic exposure information and any badges assigned. It also contains a plus and a minus icon for zoom in/zoom out changes. A **Viewer Toolbar** runs along the bottom of the **Viewer Area**. Both the bar and the **Viewer Toolbar** follow the **Viewer** in any orientation and size.

To change the layout:

- Drag the divider (between **Viewer** and **Thumbnail Browser**) up or down (in landscape layout).
- Drag the divider (between **Viewer** and **Thumbnail Browser**) to the left or right (in portrait layout).
- Choose **Toolbar > Layout**. Changes orientation to portrait to the right of the **Thumbnail Browser**.
- Choose **Toolbar > Show**. Hides or shows **Viewer**, amongst others.
- Choose **Menu > Window > Viewer in Separate Window** ($\text{⌘} + \text{⌘} + \text{V}$) ($\text{Ctrl} + \text{Alt} + \text{⌘} + \text{V}$). Creates a separate Viewer (for dual screen use, for example)
- Choose **Menu > Window > Full Screen Viewer** ($\text{⌘} + \text{⌘} + \text{F}$) ($\text{Ctrl} + \text{⌘} + \text{F}$). Fills screen with **Viewer** image and **Viewer Toolbar** only.
- Choose **Menu > Window > Standard** ($\text{⌘} + \text{⌘} + \text{T}$) ($\text{Ctrl} + \text{⌘} + \text{T}$). Produces default layout.
- Choose **Menu > Window > Viewer** ($\text{⌘} + \text{⌘} + \text{3}$) ($\text{Ctrl} + \text{⌘} + \text{3}$). Hides **File Browser**, **Tools** and the **Thumbnail Browser**.

Resizing image in Viewer

To change the size:

- Activate the **Zoom** tool in the **Viewer Toolbar**. Click on image in **Viewer** for 100% view (toggle function to revert).
- Hold down **Cmd + +/-** / **Ctrl + +/-** to enlarge/reduce the image.
- Press the plus/minus zoom symbols in the top right hand corner of the **Viewer**.
- Fit to window. **Menu > View > Zoom to Fit** ($\text{⌘} + \text{0}$) ($\text{Ctrl} + \text{0}$)
- Zoom to 100%. **Menu > View > Zoom to 100%** ($\text{⌘} + \text{⌘} + \text{0}$) ($\text{Ctrl} + \text{Alt} + \text{0}$)

Resizing Viewer

- Move dividers to increase or decrease **Viewer** area.
- Hide the **File Browser** and/or **Tools** and/or the **Thumbnail Browser** to free up space. Image enlarges automatically to fill area.



VIEWER TOOLBAR

Either click on the icons or use the shortcuts to access the following tools. Both methods have a toggle function.

Compare View **w / w**

Allows comparison of two images shown side-by-side in the *Viewer*. Images from different folders can be compared.

Select a thumbnail to be first image in the *Viewer*. Click on the *Compare view* tool (or press 'w'), then select desired comparison thumbnail. Image info as well as rating/approval levels are displayed for both images. Press the 'S' key to switch images. Option click a thumbnail to be new first image. Click on tool or press 'w' function to toggle back to standard view. Press the 'A/B' button at the top of the viewer bar to switch between portrait and landscape formats.

Crop tool **c / c**

Drag-activated crop tool with placement/centering grid. Can be customized in the *Crop & Orientation* tool in the *Tool Area* to conform with certain aspect ratios. Crop dimensions appear immediately beneath cropped area while mouse is pressed. Select another tool to view without crop and select *Crop* again to view with crop. Click outside of crop to remove it or *Undo Change Crop* (**⌘ + Z**) (**Ctrl + Z**) to revert. Press a number (1-9) on the keyboard while activating the *Crop* tool to determine the number of (temporary) lines in the grid. Crops can also be viewed on thumbnails (see *Thumbnail Browser/Viewing*).

Straighten tool **r / r**

Provides a straightening function. Place the cross cursor on any chosen point on the image, mouse down and trace a landscape or portrait line (real or imaginary) which you want to become a perpendicular landscape or portrait. Release the mouse button and the image automatically aligns to the line orientation you chose. With the *Crop & Orientation* tool open, you can additionally read off the number of degrees the image has been rotated.

See also *Crop & Orientation* under *Tools* for refinements.

Neutralization tool **n / n**

Allows a rapid neutral color balance to be made. Position the tool over an area judged to be neutral and click again. Look at the RGB readout (bottom right of frame) for more information.

Zoom tool **z / z** - in **⌘++**, out **⌘+-**, to fit **⌘+0**, to 100% **⌘+Alt+0** in **Ctrl++**, out **Ctrl+-**, to fit **Ctrl+0**, to 100% **Ctrl+Alt+0**

Position the tool over the area you want to zoom in on. Clicking will produce a 100% view. Clicking again will revert the image to the original size. This percentage can be read off the bar just above the *Viewer*, in the far right corner.



Hand tool **h / h**

Used to move the image in the *Viewer* when zoomed in. Hold down the spacebar for temporary use.



Color picker tool **i / i**

Places color-channel value-markers for specific points on image in *Viewer*. To move them for comparison, hover the color picker cursor over the marker (the tool active must be active). The tool cursor reverts to a regular arrow cursor for dragging. All markers can be deleted by backspace/delete with the tool active. Different read-out options (RGB / Output / Lab) are available via *Color Info*, found on the far right of the *Viewer Toolbar* (see following page).



Shadow warning **^ + ⌘+d / Ctrl+d**

for options: **^ + ⌘+w / Ctrl+w**

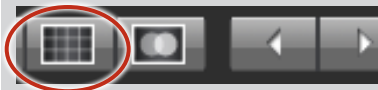
Marks areas of the image that are rated as underexposed. These areas appear as light magenta (default) and cover the affected areas of image. Select **Menu > View > Warning Options** (or use shortcuts) to change threshold settings and the warning color. Alternatively, **Ctrl / Ctrl** clicking the icon and then the pop up menu that appears will directly access the *Warning Options* dialog.



Highlight warning **^ + ⌘+h / Ctrl+h**

for options: **^ + ⌘+w / Ctrl+w**

Marks areas of the image that are rated as overexposed. These areas appear as light cyan (default) and cover the affected areas of image. Select **Menu > View > Warning Options** (or use shortcuts) to change threshold settings and the warning color. Alternatively, **Ctrl / Ctrl** clicking the icon and then the pop up menu that appears will directly access the *Warning Options* dialog.



Grid **⌘+g / Ctrl+g**

for options: **^ + ⌘+g / Ctrl+↑ + g**

Places a grid over the *Viewer* image to aid composition, etc. Select **Menu > View > Grid Options** to change the number of lines and their color. **Ctrl / Ctrl** clicking the icon and then the pop up menu that appears will directly access the *Grid Options* dialog. Press **Alt / Alt** to reposition the grid over the image with the mouse.



Overlay **⌘+o**

for options: **^ + ⌘+o / Ctrl+↑ + o to drag: ⌘+mouse / Alt+mouse**

Allows another image to be superimposed. Used primarily in fixed layout composition, montage, etc. Uses JPEG, TIFF, PNG, PSD, PDF and GIF formats for the overlaid file. Choose **Menu > View > Overlay Options** to access opacity and scale options as well as a prompt to select the overlay file, which is automatically placed after selection. Alternatively, **Ctrl / Ctrl** clicking the icon and then the pop up menu that appears will directly access the *Overlay Options* dialog. Files can also be browsed in the Finder or placed by drag and drop. Overlaid images can be moved by Option (**Alt / Alt**) dragging with the mouse.



Previous image ⌘+ ← / Ctrl+ ←

Displays previous image in the *Thumbnail Browser*, replacing the current image in the *Viewer*.



Next image ⌘+ → / Ctrl+ →

Displays next image in the *Thumbnail Browser*, replacing the current image in the *Viewer*.



Switch compare images s / S

Switches the position of the two images in *Compare View* in the *Viewer* from left to right and vice versa.



Color Info

Provides an input RGB, Output or Lab readout of the area beneath the cursor when positioned on an image in the *Viewer*.

Tip

Full screen view fills the whole Viewer area. (Menu is hidden) but retains the Viewer Toolbar for continued checking and navigation control.

Menu > Window > Full Screen View.

⬆+⌘+F
⬆+Ctrl+F

Tip

You can change the Approval level of the selected image in the Thumbnail Folder and in the Viewer by simply pressing 1, 2 or 3 for green, yellow, or red. Clicking the green-yellow-red icon in the Viewer will have the same effect.

Tip

Create two Viewer images side by side to compare sharpness settings, for example.

Select an image in the Thumbnail Browser. Choose Compare view in the Viewer Toolbar then choose Menu > View > Compare Image.

Any adjustments made now affect the left hand image only.

Tip

Mac Ctrl/right click the Warning, Grid and Overlay tools on the Viewer Toolbar to access options.

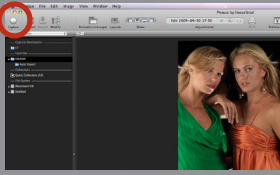
Win Right click the Viewer Toolbar to reveal the View list from the Menu to access options.

Tip

Thumbnail badges assigned to files also appear on the left of Viewer header bar as a reminder when the Thumbnail Browser is hidden.

Tethered Capture

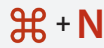
Allows the control of Hasselblad digital camera products when connected by FireWire to a computer.



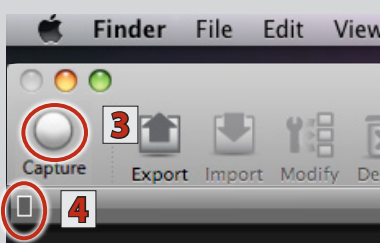
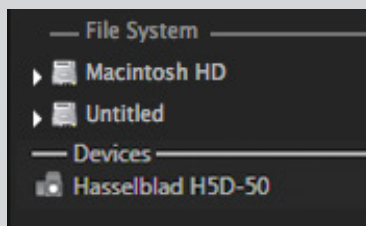
Tethered capture

Shortcut

Capture



Ctrl + N



Connection

Connect your Hasselblad camera to a computer via a FireWire cable. An icon will appear under **Devices 1** in the **File Browser** and a heading in the **Camera tool 2** affirms that connection has been made. Open the **Job Info** tool and make the appropriate settings. Regarding storage space, you can check the amount left by selecting the **Capture Destination** folder in the Finder and reading the figure displayed to the right in the **Thumbnails Browser** bar.

Capture

See under **Tools** for description of **Camera** tool. According to model/configuration, the camera can be triggered either by:

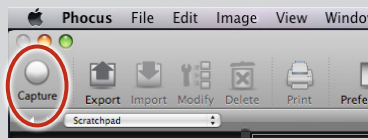
- the **Capture** icon in the **Toolbar 3** (H models, motorized V models and V models with winder only).
- the shortcut – ⌘ + n / Ctrl + n
- the camera itself.

After exposure, the capture is stored directly in the folder that you have designated to be the **Capture Destination** folder (default: **Phocus Captures**) (see **File Browser** section about how to create a new capture destination folder). The name of this selected folder appears at the top of the **File Browser** as a reminder.

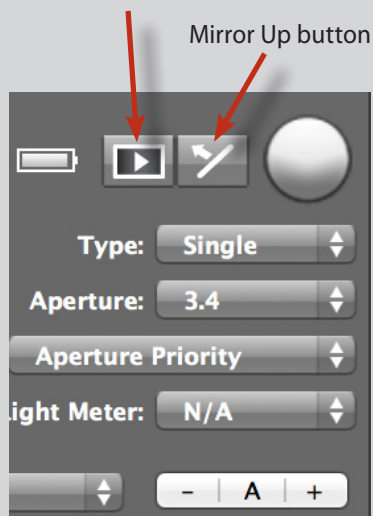
Immediately after exposure, the capture preview appears in the **Viewer** and in the **Thumbnail Browser**. An icon appears **4** on the left hand side of the bar just above the **Viewer** to indicate progress. It disappears when the capture has been stored.

Points to note

- *Captures are stored directly in the chosen capture destination folder. You should therefore always check beforehand that you have selected the correct folder (see Capture Destination section for more information).*
- *All tethered captures are stored as lossless compressed 3F files in the capture destination folder.*
- *Using the Camera tool you can accurately control the camera setup. There are a variety of controls available under this tool, depending on the camera model. These include, apart from shutter-speed, aperture etc., even special focusing options allowing for remote focus increments using the “-” or “+” buttons and modifier keys to control focus and depth of field.*
- *The available set of active controls in the Camera tool will differ according to the digital camera model. H-system cameras allow more control than V-system cameras due to their greater integration and overall more advanced data-controlled capabilities.*
- *The Mirror Up button on the Camera tool only functions with H system cameras.*



Live Video button



Tip
 In Preferences you can select a favored layout that is activated automatically when a camera is connected.

Live Video

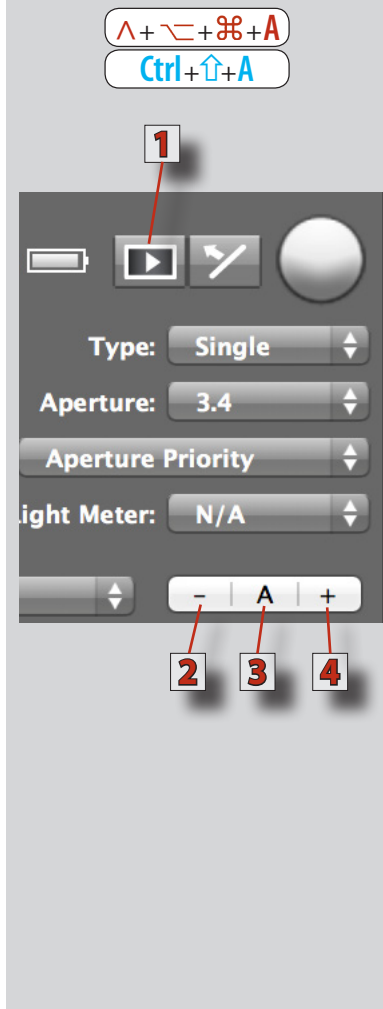
Both H and V-system cameras can utilize the **Live Video** function, though the H-system offers a greater opportunity for automation. This function is intended for tethered operation in studio set-up environments for product and similar non-moving subjects where careful compositional placing in conjunction with layout sketches, etc is required. It provides a continual image (refreshed about once every second) that appears in the **Viewer** which can be zoomed in and checked for focus. An audio and a visual aid are also available to help you make very accurate focus settings.

Procedure

As this function requires that the shutter remains fully open, it allows a great deal of light onto the sensor. The only exposure controls left are therefore the aperture setting and the amount of ambient light. This results in a need for quite low level lighting and small apertures (normally a combination of both). This might demand some experimentation regarding the power of your lighting set up and the aperture setting you had planned on using. When using H-system cameras, you can use the Auto aperture setting, though this might not of course correspond with your desired working aperture setting.

H and V-systems

1. With Phocus running, tether the camera.
2. Open the Camera tool (default: under the Capture tab) and make the desired setting adjustments
 - H ONLY* - Set the camera to Manual focus. Aperture and shutter speed settings are temporarily overridden in Live Video mode.
 - V / CFV ONLY* - The lens must remain open for the duration of the session. Use the appropriate method according to the equipment used. Make a temporary aperture setting.
3. The function is activated either by:
 - pressing the Live Video button in the Camera tool
 - Choosing Menu > View > Live Video
 - ⌘+I / Ctrl+I
4. The Viewer now displays a black and white image.
5. Grid lines and /or overlay can be introduced to check for compositional positioning etc.
6. A focus check can also be made (see below).



Focus checking

By using the *Zoom* tool in the *Viewer Toolbar*, you can obtain a close up of the section of the image you want to check for focus. The *Viewer* image changes format and displays a view beneath. This is the focus view which plots the accuracy of the focus setting displaying it in the form of a continually updated graph.

With tethered H-system cameras, make an initial auto focus, either directly on the camera or by pressing 'A' 3 on the *Camera* tool. Press the *Live Video* button 1 to activate.

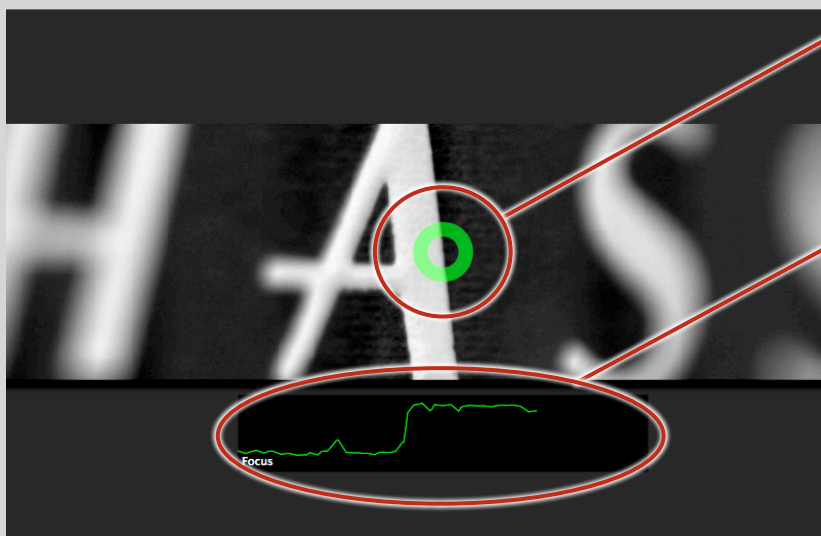
- Click on the '-' 2 or '+' 4 buttons on the tool (not + or - on the keyboard) to alter the focus.
- Hold down ⌘ / Ctrl and click on the '-' or '+' buttons for finer focus adjustments.
- Hold down Alt / Alt and click on the '-' or '+' buttons for larger focus adjustments.

Press ^ (Ctrl)+⌘+⌘+a / Ctrl+⬆+a to activate the *Audio Feedback* function that signals when the focus setting is at its optimum setting.

The goal is to obtain the highest reading on the graph for that particular area you have selected.

With V system /CFV combinations, focus must be altered manually on the lens.

Focus checking in Live Video mode



Select the *Zoom* tool and click on the area you want to check to produce a close-up.

Changing the focus setting produces an automatically updating graph. The higher the reading, the more accurate the setting measured from the selected area. An audio signal is also available.

Tool Area

The Tool Area is on the right hand side of the screen. It consists of four individual collections of tools called tabs. Each tab can be customized for content. The area is always in the same placing in the layout but can be hidden to increase working space.



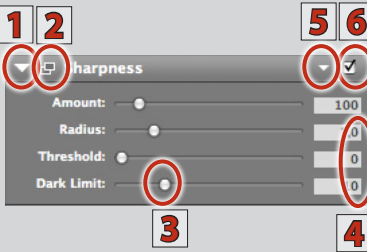
Tool Area

Shortcut

Show/Hide

⌘ + ⌘ + T

⌘ + Ctrl + T



Tip

Select *Toolbar > Layouts > Edit to save specific variations of arrangements, tool visibility, floating panels, active tool tab, etc.*

These sets can be copied, imported and exported.

Tools are grouped under four tabs for convenience; *Capture, Browse, Adjust* and *Export*. This grouping is customizable and so the default setting should only be seen as a starting point for your own workflow preferences. Any combination of tools, including duplicates, can be grouped under any tab. After selection, tools are opened by a disclosure triangle **1** to reveal slider control **3** and numerical **4** options. A check box **6** applies setting changes. Some tools have additional options accessed by the disclosure triangle **5** on the header bar. Clicking the float button **2** will close the tool on the list and create a floating panel of the tool in the viewer area instead.

Tabs

There are three ways to select a tab and bring it to the front:

- Click on the tab name itself.
- Choose *Menu > Window > Tool Set > Capture / Browse / Adjust / Export*.
- Use the keyboard shortcuts (see illustrations).

Click on the right hand menu triangle on the *Tool* header to see the menu listing the tools available. Checking an item will add that tool to the selected tab or you can select *Load Default Tool Set*.

Alt / Ctrl clicking the disclosure triangle will either collapse all tools in a tab or expand all to fill the panel.

Tools

To add a tool to a tab, click on the right hand menu triangle on the *Tool* header to reveal the tool list and then click on the required tool.

To remove tools from individual tabs, drag and drop the tool to any area outside of the list. Each tool can be repositioned on a tab list by drag and drop and each tool can be floated to anywhere on the screen.

Tool settings

Tools are opened by clicking the main disclosure triangle on each individual *Tool* header. This allows setting changes, provides information etc according to the tool. Some tools use slider controls together with numerical input.

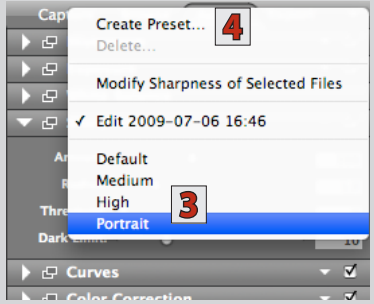
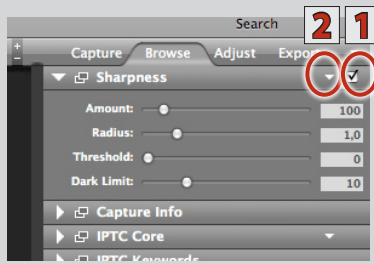
Capture ⌘+1
Ctrl+1

Browse ⌘+2
Ctrl+2

Adjust ⌘+3
Ctrl+3

Export ⌘+4
Ctrl+4

Example of tab contents



You can either key in a specific value or click in the view and use the 'up' and 'down' keys to raise or lower the values.

Tool Presets

Many of the tools in the **Tool Area** include the option for creating presets. These are simply shortcuts to saved settings (relevant to that particular tool) that you want to apply to other files.

To create a preset, proceed as follows:

1. Check the box **1** on the Tool header to preview the adjustments and settings you make.
2. Click the smaller menu triangle **2** on the right hand side of the Tool header to access the options **3**.
3. Click on Create Preset **4** to reveal a dialog where you name the preset. Press the Create button to save it. This preset will now appear in the Tool options list.
4. Files in the Viewer can now be adjusted to precisely conform with the settings you made for the preset just made, or to predefined presets, by opening the tool again and clicking on the preset name.

See the following pages for a general description of presets in Phocus!

In this manual it is assumed that you have a working knowledge of how to use most of the standard image editing tools found in most graphics editing applications.

The tool descriptions here are therefore basic and show how they appear in Phocus. There are many articles in books, magazines and on the Internet as well as videos that discuss and explain in great detail the specific aspects of image editing tools.

Tip

When making changes in a tool, you can use the 'up' and 'down' arrows on the numerical section of the keyboard instead of manual numerical input or using the sliders.

Tip

You can simultaneously close all tools in a tab by **Alt / Ctrl** clicking on a collapse triangle on any tool. Similarly, you can expand the uppermost tools in a tab by **Alt / Ctrl** clicking on a triangle on any tool, to fill the tool area.

Tip

Press **⌘ + Z / Ctrl + Z** after any changes made in Tools to undo the change and revert back one step at a time.

Press **⌘ + ⌘ + Z / Ctrl + Y** to reapply the same changes again, one step at a time.

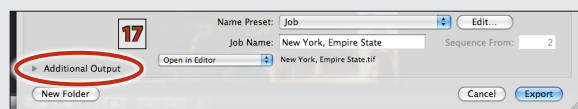
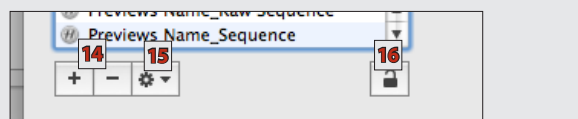
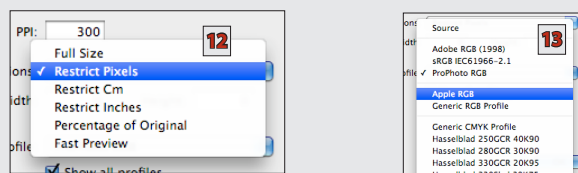
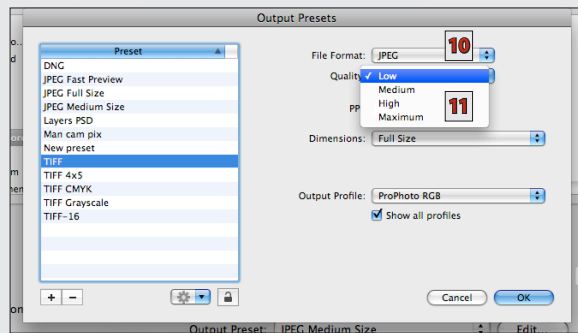
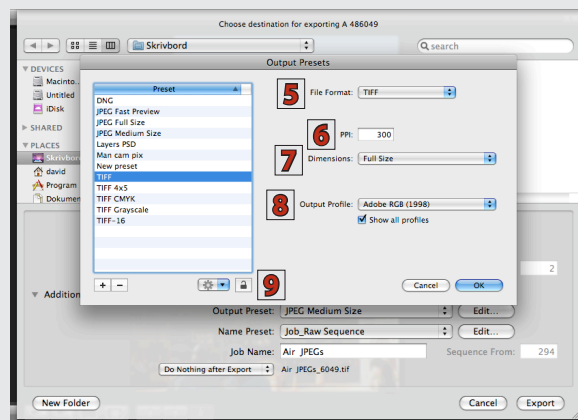
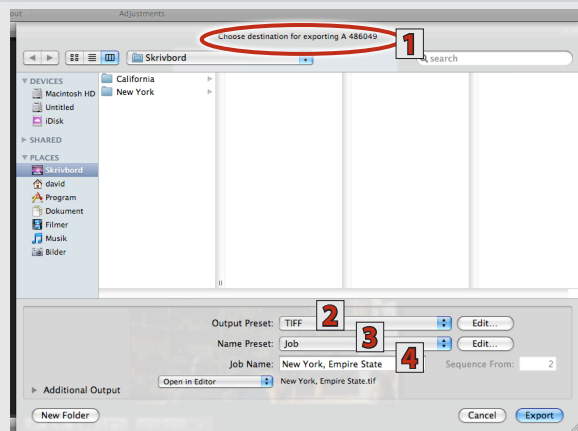
Tip

Any tab can contain any or all tools.

Tip

In preferences you can select a specific layout to be triggered when holding down the option key and clicking a specific tab.

Presets - general



Presets are essentially shortcuts to default or user created and stored settings. They save time and effort as well as provide security regarding various automated tasks.

In Phocus, presets occur as an integral part of a number of different actions. Some presets can also be accessed from different locations. For example, in **Output Preview** in Tools, you might choose TIFF as your preferred format in the **Preset** menu. When exporting, the options window not only displays this choice in the **Output Preset** menu but also allows you to change it again.

A change made here, to Layers PSD for instance, is immediately reflected back in the **Output Preview** tool. In other words, a preset is an independent feature that can be accessed, changed and checked at various locations. References to it are continually and automatically updated.

Example - Output presets

When exporting an image, the **Export** window displays a list of options, the first being destination **1** for the file, chosen in the conventional manner.

The lower part of the window lists: **Output Preset 2**, **Name Preset 3**, **Job Name 4** etc. **Output Preset** and **Name Preset** have **Edit** buttons.

Clicking on the **Edit** button for **Output Preset** will display an options panel: **File format 5**, **PPI 6**, **Dimensions 7** and **Output profile 8**.

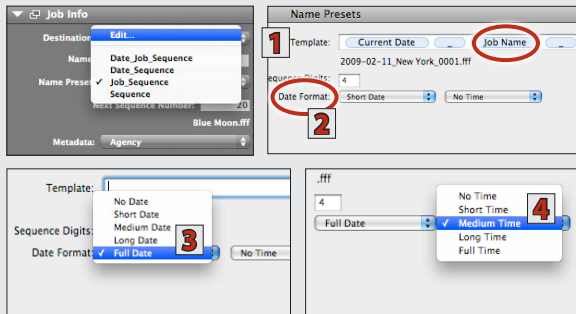
In this example, the **File Format** shows TIFF as the choice, which would have been shown in the **Output Preview** tool. (The choices are often displayed dimmed because the presets are locked. Clicking on the unlock symbol **9** (or the plus symbol at bottom left of list to create a new preset) allows access to the menus).

If JPEG is now selected on the list, JPEG is displayed in the **File Format** menu **10**. Clicking on the menu reveals further choices **11**.

Clicking on the menus will reveal lists of choices available, for example **Dimensions 12** and **Output Profile 13**.

The plus and minus signs **14** allow the addition and deletion of presets from the list. Presets can also be duplicated, exported and imported **15**. You can also lock all settings to prevent inadvertent deletion **16**.

Additional Output 17, is also an option available in the **Export** window. Extra preset choices are revealed here and are selected in the same manner as above.



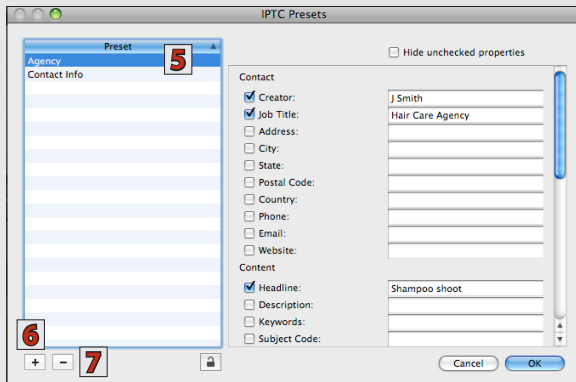
Name presets

Name presets are dealt with in the same manner. Similarly, *Name Preset* is accessible from more than one location; when exporting (see section above) or from the *Job Info* tool (**File Name > Edit**).

In this example, *Job Name* could be removed by selecting it in *Template 1* and deleting it (backspace).

Selecting *Date Format 2* would also allow a *Full Date 3* and *Medium Time 4* for instance, chosen from the menu, to appear instead, etc.

Again, there are a great number of choices here to cover most needs.



IPTC presets

IPTC Core presets use the same concepts in the options.

With the *IPTC Core* open (*IPTC Core* tool > **Create Preset**), presets can be selected **5**, created **6** and deleted **7** to include or exclude the desired information checked on the list.

See further in this chapter for a full description of *IPTC Core* and *IPTC Keyword* tools.

Tool presets

Tool presets are more straightforward in creation and use. Please see previous section in this chapter for details.

General

The extensive range of settings on offer produces a very broad choice of combinations to meet professional demand. You are encouraged to investigate this aspect of Phocus to see how it can be customized to suit your particular needs.

Properly implemented, presets can make a considerable positive impact on workflow, reducing time demands and errors.

TOOL LIST

Adjustments Browser

See full explanation in the *Adjustments* chapter.

Camera

Reflects the settings from a tethered camera, according to model. An H-system model will provide more information—focus mode, exposure mode, mirror up, for example—than a V-system model due to its greater digital capabilities and integration. See description of *Live Video / Tethered Capture* for full details.

Capture Info

Lists the camera metadata recorded at the time of capture and is dependent on camera model and equipment used. Metadata is an integral part of each individual image file. A Hasselblad H-system camera model will provide more information than a V-system model due to its greater digital capabilities and integration.

Capture Sequencer

Enables various kind of tethered capture automation such as: interval capture, self timer and exposure bracketing. There are a number of factory presets but you can set up custom sequences and save them as additional user presets.

A sequence consists of a number of capture steps. For each step you can define aperture and/or shutter offsets relative to the exposure settings set when the sequence is started. Using the cycle button you can set up a number of repeats of all steps and indicate a timing interval for the repeats. It is also possible to set up a pre-delay thereby delaying the start of the sequence after pressing play.

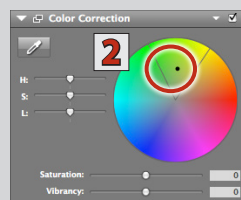
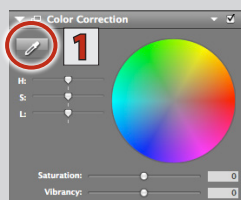
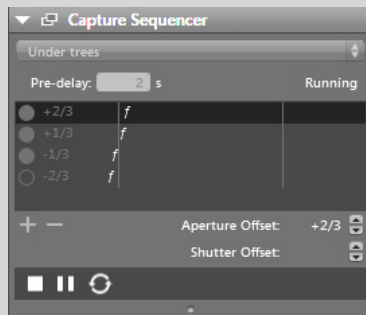
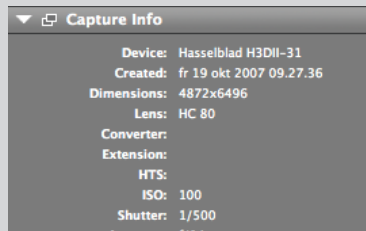
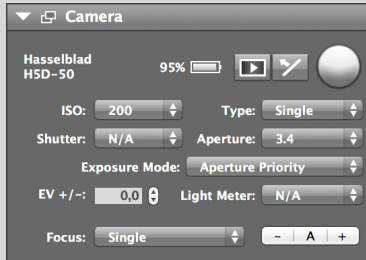
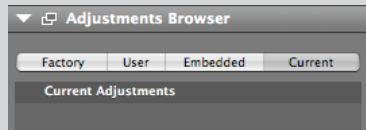
Color Correction

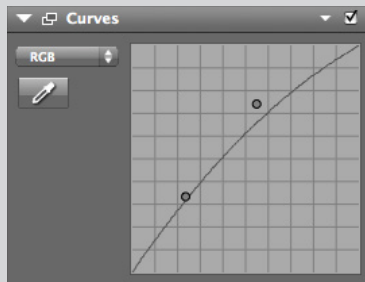
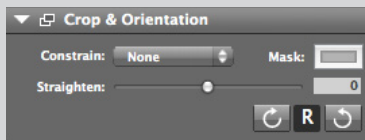
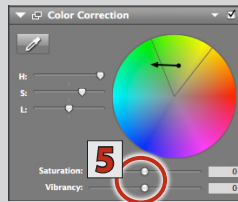
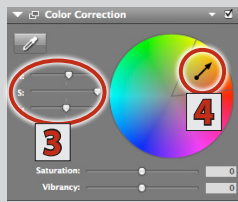
For selective and global color correction. The colour picker can be used to isolate a tone and then modify it either by using the *Hue*, *Saturation* and *Lightness* sliders or by the color wheel tool.

Global changes can be made using the *Saturation* and *Vibrancy* sliders.

To make specific tonal changes:

1. Select the color picker **1**. (Keep Shift pressed down for multiple samples)
2. Place the picker on the desired tone in the image in *Viewer*. A corresponding point **2** will appear on the color wheel.
3. Hue, Saturation and Lightness can be adjusted by:
 - a) moving the sliders **3**, or,
 - b) using the arrow keys on the keyboard, or,





Tip

CURVES

- To move a gravity point, either drag it with the mouse or select it and then use the arrow keys. Hold down the **Ctrl** / **↑** key to move the point in larger increments.
- To remove gravity points from a curve, press the **Delete** or **Backspace** key.

c) clicking on the point on the wheel and dragging it to form an arrow **4**, which can be extended, shortened and rotated to alter the settings. You can also increase or decrease the coverage of the segment by dragging the boundary markers as well as rotating the segment within the color circle.

4. **Undo** (**⌘** + **Z** / **Ctrl** + **Z** or **backspace**) reverts all changes one step at a time, while the **tab** key changes the segment choice if multiple selections were made.

To make global changes:

Saturation & Vibrancy: Non-selective (global) saturation and vibrancy changes are made by the slider controls **5**. **Saturation** affects all of the image whereas **Vibrancy** is more constrained and protects areas already saturated (useful for skin tones, for example).

Crop & Orientation

A list of constraints is available (default: **None**) to set the format as well as orientation of the **Crop** tool. Clicking on the **Mask** icon will access a window where both color and opacity of the mask can be selected.

The **Straighten** function has quick 90° buttons as well as a slider that allows a finer adjustment of +20° to -20° shift in orientation.

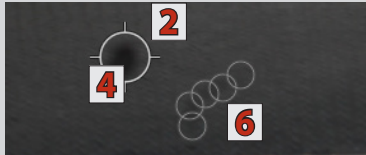
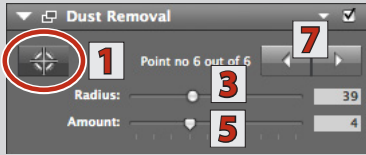
The **Straighten** function is also accessible by way of the **Viewer Toolbar**. Clicking on the **Straighten** icon will convert the arrow cursor into a cross. Place this cross on any chosen point on the image and trace a landscape or portrait line (real or imaginary) which you want to become a perpendicular landscape or portrait. The image automatically aligns to the line orientation you chose. With the **Crop & Orientation** tool open, you can additionally read off the number of degrees the image has been rotated.

To make larger adjustments, press on one of the rotation arrow icons (in the **Crop & Orientation** tool) to make a 90° adjustment, using the respective icon for clockwise or anti-clockwise orientation. The **'R'** icon illustrates the current orientation and changes accordingly (click to toggle). Use the slider to make additional fine adjustments. When in crop mode, you can also hold down the **Alt** key and drag outside of the cropped area to rotate the image freehand. You can also reposition the cropped area by the arrow keys

Curves

Curve adjustments can be made as a combined RGB setting or by selected individual channels. To adjust the curve, click and drag on the graph. Each time you click on a new point, you will create a gravity point, which will pull the curve toward itself. You do not need to click on the actual curve. This system makes sure that the curve is always smooth. Ensure to check the check box on the **Tool** header bar so that the preview image will update to reflect the changes.

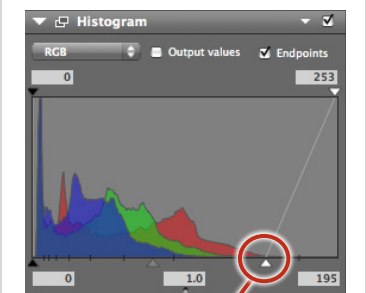
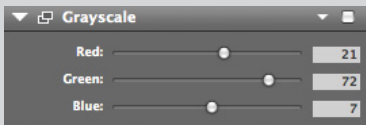
Click the eyedropper icon and mouse over the areas on the **Viewer** image that you want to sample. The value is automatically represented on the curve. Clicking on the sampled area will fix a point on the graph. Revert by pressing **delete** or **backspace**. Options contain presets for consistent curve settings within a batch.



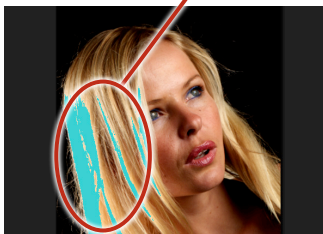
Dust spots marked by the Dust Removal tool.

Note

Active dust removal points in tethered capture do not show on embedded display thumbnails.



 / Shift key



Dust Removal **d / d**

The **Dust Removal** tool is designed to quickly remove spots caused by dust particles on the sensor. This tool can be used to clean up images either individually or, in combination with the **Modify** tool, for batch processing.

Activate the tool by clicking **1** or by pressing "D" on the keyboard. Locate and then mark the spot(s). The position of the dust tool circle **2** can be altered by dragging in the center of the marker circle. Radius can be altered either by the **Radius** slider **3**, by dragging when placing the marker or by dragging the circle edge after positioning **4**. Amount is adjusted by a slider **5** or by manually typing in a value in the text tool box.

You can also draw selections **6** by holding down **Alt (Mac) / Ctrl (Win)** for irregular marks. Multiple placings can be made. These can be individually selected by the arrows **7** in the tool and then individually adjusted (press **Delete** to remove a spot). You can remove dust spots from a complete batch of images by selecting your images, clicking the tool disclosure triangle and selecting **Modify Dust Removal of Selected Files** or by using **Modify** found in the **Toolbar**. **Dust Removal** appears as an item on the **Modify** dialog check list.

Exposure

EV, contrast, brightness, highlight recovery, shadow fill and clarity can be set by sliders or value fields. Adjust when viewing at 100%.

Very briefly, highlight recovery reclaims data from the raw file to repair burnt out highlights, shadow fill improves the quality of shadow areas while clarity improves the contrast of mid-tones to give them 'punch'.


As usual, the use of these tools, singularly or combined, might require a certain amount of experimentation for optimum results for individual files. See separate sources for in-depth explanations.

Grayscale

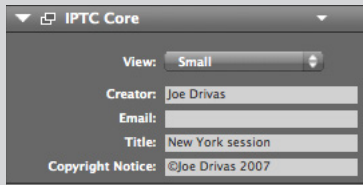
Temporarily converts image to a grayscale (while retaining RGB file components). Use RGB slider controls to adjust balance and effect. Files can be exported as color component grayscale (using RGB or CMYK channels) or as a pure grayscale. Uncheck the box in the **Grayscale** tool to revert back to color if required.

Histogram

Graphs of combined or separate channels can be displayed (default: combined). Shadow, highlight and gamma settings can be made in the value fields or by using the slider controls. There are two checkboxes: **Output Values** and **Endpoints**. Check the **Endpoints** box to show top sliders and value fields for adjustment. (if the endpoints are not at default setting – 0 and 255 – then the values will appear in the top corners even if the box is not checked). F-stop marks are visible when the histogram is in input mode. The tool is resizable (drag lower section of tool) to accommodate the extra information.

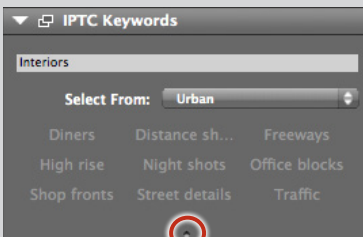
By holding down the  / **Shift** key when using the sliders you can see when clipping occurs (in the **Viewer**) in the shadows and highlights. This produces the same effect as the **Shadow Warning** and **Highlight Warning**.

To change the color and threshold point settings of these warning demarcations, hold down the **Ctrl / Ctrl** keys while clicking on either the shadow or highlight slider control in the **Histogram** tool. A **Warning Options** panel opens, allowing changes.

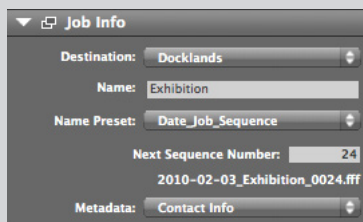
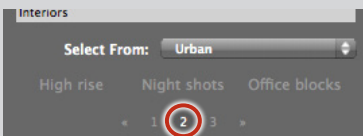
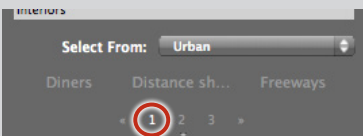


Tip

When using Recovery and Shadow Fill you can use highlight/shadow warnings as a guide.



Tool can be reduced in size by dragging upwards resulting in tabbed mode illustrated below.



IPTC Core

The *IPTC Core* tool allows you to apply presets of IPTC metadata to files about creators, contact information, archive/library descriptions, standard job types, etc.

Click the menu triangle on the Tool header to access *IPTC Views* option panel for editing/creating and choosing presets.

Edit allows the choosing of informational items that are included in the preset lists called *Small*, *Medium* and *Large* (for example, you might always want to include your name, so that would be checked in all three preset lists, but you might only want to include location in the medium and large preset lists).

With any file, click on *Small*, *Medium* or *Large* to reveal the preset contents as a drop down list in the tool, thereby providing the information that is attached to that particular file. See larger illustrations of *IPTC Core* on following page. See special section for further details.

IPTC Keywords

Allows keyword inclusion to files individually or from sets. The tool can be contracted by dragging the lower bar upwards, automatically grouping the keywords (buttons) into numbered collections, as in the illustrations.

Clicking on the menu bar on the tool opens the settings panel to view sets, edit sets, select saved sets and create new sets. See *Editing* and *Managing IPTC keywords* on the following page for full details. Keywords can be added to thumbnails, singly or to multiple selections. Either write in a new keyword or choose from the list. See previous special section for further details.

Job info

Provides a selection of settings concerning new captures. Particularly useful for tethered work.

Destination: Select the desired *Destination* folder from recent destinations or by normal browsing.

Name: A new job name can be entered here.

File name: Choose from the four presets to change the way that files are named or make an edit.

Next Sequence Number: Enter the desired number for the new sequence.

Metadata: This links an *IPTC Preset* (see below) to the file. The chosen *IPTC Preset* controls the amount and type of metadata that is included in the raw file with tethered capture, or with the Import function when importing.

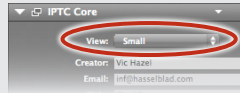
To create a new preset, click on *Edit* to reveal the options panel. Click on the plus sign to create a new name and then use the check boxes and information section to add or remove items. When saved, the title of this preset will appear on the Metadata menu bar. See illustrations overleaf.

IPTC Core

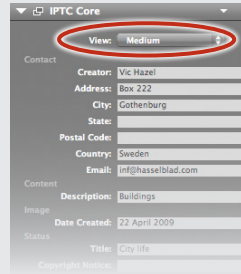
The *IPTC Core* settings can contain a good deal of information.

By grouping information into three presets – *Small*, *Medium* and *Large* – you can quickly control the information included.

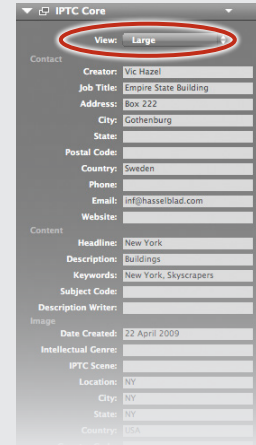
Small



Medium

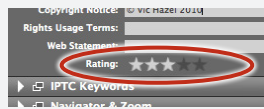


Large

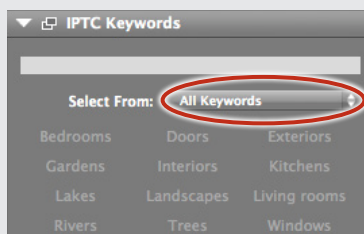


Tip

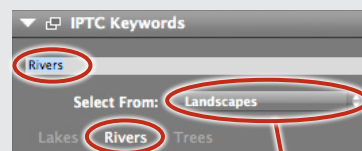
A star rating can be included with an *IPTC* preset. Click on the appropriate number of stars found furthest down on the *Large IPTC Core* list.



Editing and managing IPTC keywords



With *All Keywords* chosen on the menu bar, all keywords from all sets will appear as 'buttons' below and any can be selected (singly or in multiples) to add to the selected file.

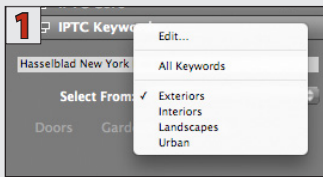


A keyword selected here appears above in the list for inclusion with the file.

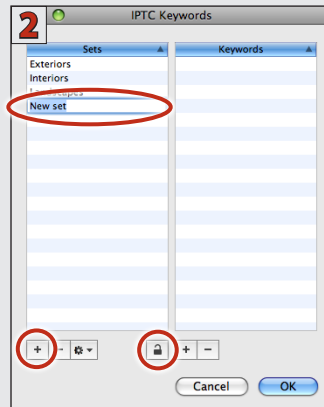
In this example, a set has been chosen – *Landscapes* – which restricts the choice to the keywords previously added to that particular set - in this case just *Lakes*, *Rivers* and *Trees*. The button *Rivers* was selected and the keyword appears above.

(continued on next page)

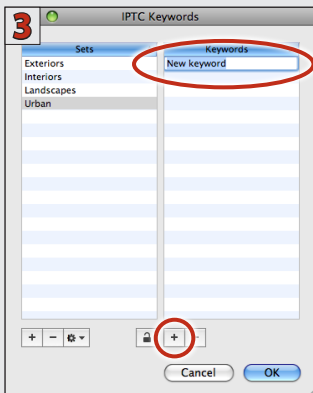
Editing and managing IPTC keywords – continued



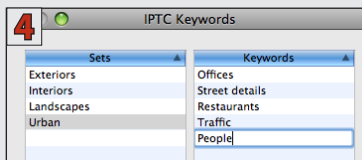
With the *IPTC Keyword* tool open, click on the menu bar and then *Edit* to open the settings panel.



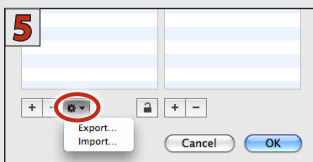
To add a set, click on the lock symbol to open it. Click on the plus sign in the *Sets* column and type in the new title.



To add a keyword click on the plus sign in the *Keywords* column. Type in the new word.



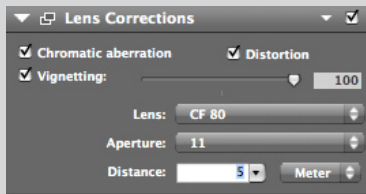
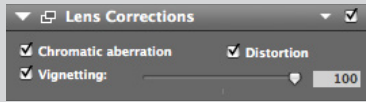
Add as many keywords as you need. To delete, select a set or keyword and click on the appropriate minus sign to delete. Click on the lock symbol to close it to retain the new set of keywords.



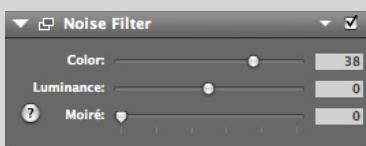
Keywords can be imported and exported as lists, even from Aperture and Adobe Lightroom.



Click on the lock symbol to protect a set of keywords against unintentional editing.



Floating tool on top of Viewer image showing track frame and corresponding enlargement in Viewer.



Lens Corrections

The interface automatically reflects the origins of the file selected. That is, files from an H camera will prompt the H lens correction tool and files from a V camera will prompt the V lens correction tool.

H-system cameras offer greater digital integration than V-system cameras and so can supply more data. H files take this data into account in the background and automatically apply it to the Lens Correction tool, whereas data noted at the time of capture from V-cameras has to be input manually. This latter situation also applies to CF lens (V system lenses) use with a CF lens adapter on H cameras. In some cases, where the lens and/or aperture is known, the settings will be preset when importing or when making a tethered capture.

Three corrections are available: *Chromatic aberration*, *Distortion* and *Vignetting*.

Chromatic aberration: Corrects "Color fringing".

Distortion: Corrects lens distortion.

Vignetting: Reduces vignetting. Check the box, then use the slider control or type in a value.

Navigator & Zoom

The *Navigator* tool can be used in several ways providing not only a navigation function but also a loupe function.

With the open tool remaining under the tab, select the *Zoom* tool from the *Viewer toolbar* and click on *Viewer* image over the detail you want to check. A track frame appears on the image in the tool window **1** (with the same aspect ratio as the *Viewer* window). Select the frame and move it to a new area if required. Frame size in tool image changes according to magnification of *Viewer* image.

Alternatively, hover the mouse over the lower part of the tool image to reveal a control panel **2** with three buttons – a plus, a minus and a track button. Selecting the track button (shortcut toggle: L) converts the arrow cursor to a track cursor for the *Viewer* image while the plus and minus control enlargement for the tool image. The track cursor can be initially placed and then fixed by mousing down. Clicking elsewhere in the *Viewer* afterwards will automatically disable the track cursor to reveal the regular cursor again.

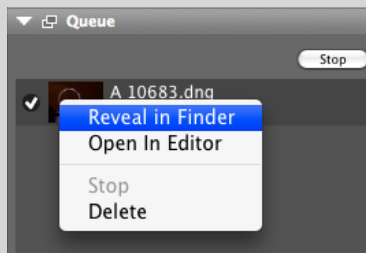
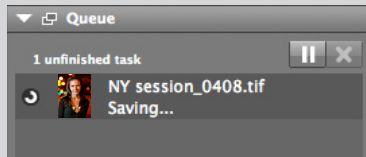
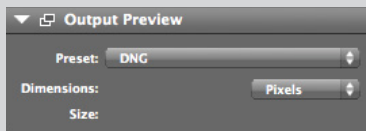
A floating variation of the tool can also be chosen, again, providing access to the three buttons if required. This produces a much larger tool window. In addition, the lower right hand corner of the window has a drag handle to alter the size.

Both click and drag as well as mouse scroll wheels can be used in the tool window (tabbed or floating) for navigation in zoomed mode. Holding down the *Alt* key will allow zooming in the tool window with a scroll wheel and *Alt*/clicking will toggle the zoomed view to 100%.

Noise Filter

Reduces noise in the image. Basic noise reduction is in place for all images, but certain textures under certain lighting conditions can produce extra noise.

The filtering tools are:



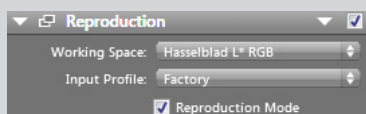
One file in the Export queue.

Tip

You can resize the Queue window by dragging the bottom edge if there are a large number of files on the list.

Tip

Drag thumbnails to the Queue tool as a quick alternative to Export as Previous.



Color: Neutralizes the coloration of colored 'noisy' pixels, typically in areas with very fine detail such as hair or on fine textured materials.

Luminance: For use with long exposures and high ISO rated images. Reduces the effect of pixels showing up as 'noise' in dark areas.

Moiré: Reduces moiré effects typically originating from patterned materials showing interference with the frequencies of the pixel structure on the sensor. Please note that due to its nature, moiré will seldom be cured 100%. However, Phocus allows you to export as two layered PSD files, with and without masking.

(Moiré can be reduced at the capture stage by either de-focusing the lens slightly or by altering the distance of the camera from the subject).

Output Preview

Shows the output size of the current image exported with a given output preset (typically already selected in the export menu).

Queue

Displays files scheduled for export, files currently being exported in the background and files already exported as well as files being imported in the background from a card reader or connected disk.

If the file has been adjusted and/or cropped, then this is also reflected in the Queue thumbnail. You can **Ctrl / Right click** the file to open a list of options (*Reveal in Finder, Open in Editor, Show Thumbnails, Stop and Delete*).

Files in the queue can be selected (**⌘+ A / Ctrl + A** for all) and paused by the Pause button, stopped or deleted via the *Options* or deleted by *Backspace / Delete*. The pause button will temporarily stop any further exports remaining in the queue not currently being exported. Thumbnail files can also be dragged and dropped onto the Queue tool to *Export as Previous*.

The number of unfinished export tasks also appears on the Phocus icon in the dock as a reminder.

Reproduction

This tool allows you to control some of the more advanced options related to colour reproduction. Please note that it is not included by default - you need to manually add it by using the tool popup found at the top right of the tool area.

Working space: Lets you select the internal working space used by Phocus. Hasselblad RGB is the default working space while Hasselblad L* RGB will provide a slightly expanded gamut combined with an L* gradation. Hasselblad L* RGB should be the preferred choice when doing reproduction work.

Input profile: Provides the option of using your own custom camera profile instead of the default factory profile. When generating the input file to be used by your profiling tool it is important to export with an output preset where the profile is set to 'Source' - this will result in no ICC transformations being applied to the image data. In addition, please note that a custom profile will be dependent on the working space selected when creating the profile.

Reproduction: Activating reproduction mode will switch to a linear film-response curve and also ensure the best possible colorimetric colour handling. As the name implies this is a mode that is primarily intended for reproduction work.

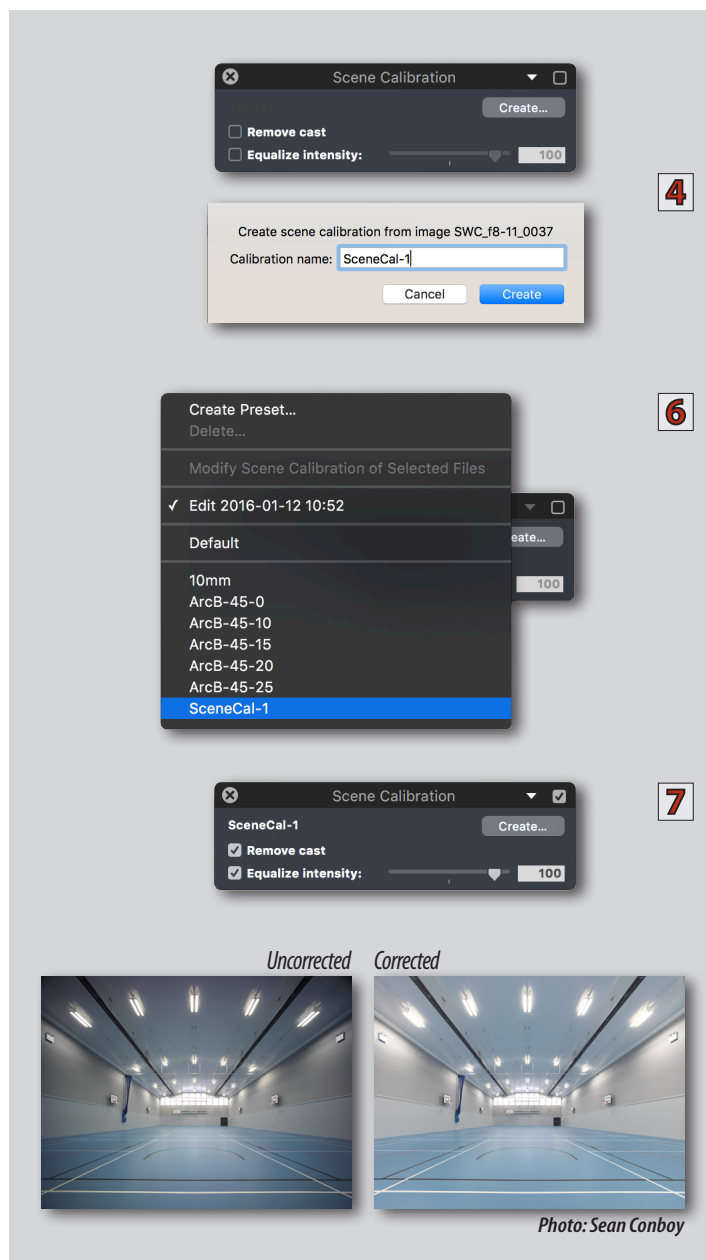
Scene Calibration

This tool helps to remove a color cast and/or uneven illumination caused by lighting variations. It has two checkboxes: **Remove cast** and **Equalize intensity**. The slider for **Equalize intensity** is used for fine-tuning to the intensity adjustment.

Remove cast: Particularly useful when tilt and shift are used, for example, where a partial unwanted color cast can sometimes be produced.

Equalize intensity: Neutralizes any overall luminance discrepancies. Useful in reproduction work and similar to even out slight variations in lighting for a more uniform distribution. The slider, ranging from 0 to 110%, allows for fine-tuning to the intensity correction.

When using H System lenses, ensure that any **Vignetting** setting in the **Lens Correction** tool is turned off as a combination of the two will overcorrect the image.



Procedure:

1. Capture your main image as usual.
2. Capture the scene calibration image using the same camera settings (tilt, shift, lens etc.) A simple method is to use an opaque white plastic sheet in front of the lens. Make sure the plastic sheet is thick enough to eliminate all details from the image. Normally a 1.5 mm thick material will be sufficient.
3. If working untethered, import both images into Phocus.
4. Select the white frame and using the **Scene Calibration** tool click the **Create** option. You will be prompted for a name.
5. Now select the actual image to be corrected.
6. From the drop down selection arrow of the scene calibration tool select the calibration file you have just created. Ensure the tool is switched on (small tick box in top right hand corner of tool box).
7. Now tick the remove cast box and the **Equalize intensity** box if required.
8. If the correction is too harsh drag the intensity slider to the left until the correction is at the desired amount.
9. If required, the same scene correction image can be applied to multiple images using the **Modify** command.



Sharpness

Sharpness contains four controls: **Amount**, **Radius**, **Threshold** and **Dark Limit**. See separate sources for in-depth explanations of sharpening tools and methods.

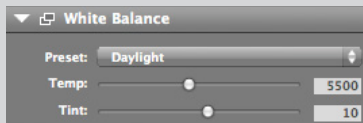
Amount: Controls the strength of the sharpening effect. Depending on image, a value between 80 and 200 is recommended as a starting point.

Radius: The larger the radius, the more extensive the sharpening effect will be. The setting depends on the nature of the image and resolution. Generally, use a large radius with lower-resolution images and a smaller radius for high-resolution output.

Threshold: Controls the point above or below which pixels are affected. Values are from 0 through 255. Very low settings will sharpen most pixels, and might create unwanted noise in soft texture, such as skin, for example. Higher settings will restrict the changes to detailed areas only.

Dark limit: Sets the brightness level below which the filter has no effect. This will prevent the filter from intensifying noise or unwanted textures. The higher the number, the less extensive the sharpening effect will be. Depending on the image, a setting between 0 and 20 is recommended.

Click on the menu triangle to access the presets: **Default**, **Medium**, **High** and **Portrait**.



White Balance

The white balance tool includes:

Preset: A menu containing standard presets as well as other preset possibilities. Multiple selected files can also be modified at the same time to ensure consistent color within a batch.

Temp: Adjusts the color temperature according to the Kelvin scale. Slider or value input.

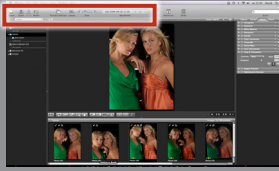
Tint: Compensates for any green (slide to the left) or magenta cast (slide to the right) or by value input.

The neutralization tool on the **Viewer toolbar** can also be used.

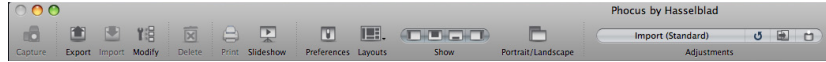
Toolbar

The Toolbar is accessible in most, but not all, layout configurations above the File Browser, Viewer and Tool Area. It consists of a number of frequently used tools for general use.

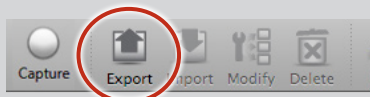
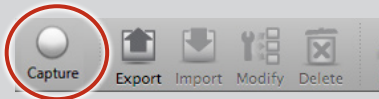
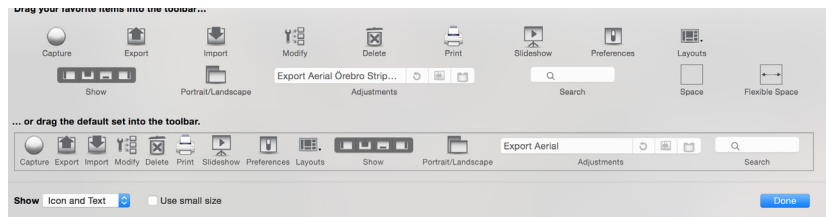
Toolbar



- ✓ Icon & Text
- Icon Only
- Text Only
- Use Small Size
- Remove Item
- Customize Toolbar...



Illustrated above is just one example of a possible *Toolbar* display. *Ctrl / Right* click the bar, to select a number of display options. Select *Customize Toolbar* to open the dialog illustrated below (Mac). This provides the opportunity to customize the layout by drag and drop, to change the size of the icons and text etc. You can drag and drop selected items or the default set onto the bar and delete items by drag and drop off the bar.



Capture

During capture, shots from a tethered camera are stored directly as 3F files in the chosen destination folder. According to model, a capture can also be controlled and initiated remotely from the keyboard.

See *Tethered Capture* section for further details:

Export

Click on the *Export* button to open the dialog. This allows you to choose the file format, resolution, profile etc. of the exported files.

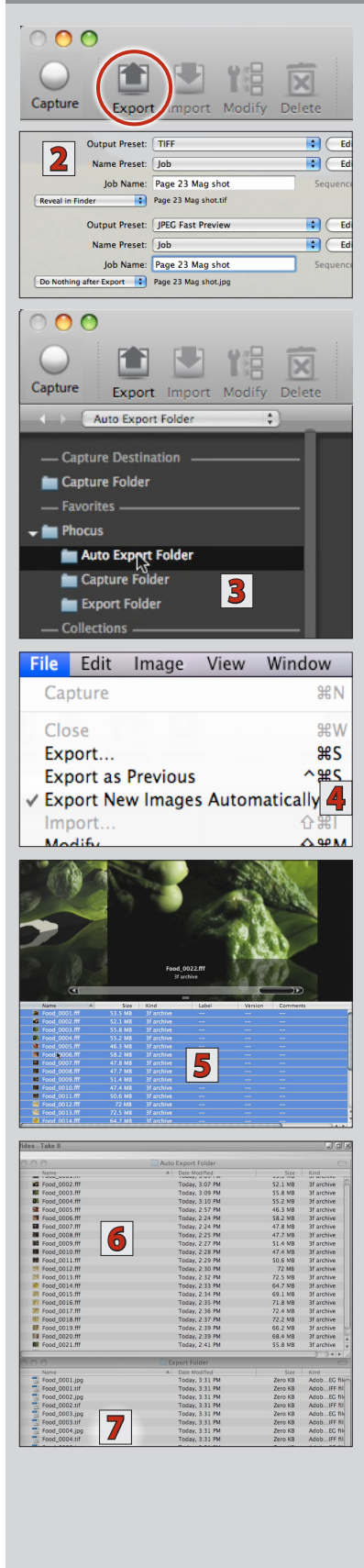
The first option is destination for the file, followed by:

- **Output Preset:** Contains a list of image file formats. Press *Edit* to open an extra dialog containing *File format, Quality, PPI, Dimensions* and *Output* profile.
- **Name Preset:** Contains a list of file-naming variables. Press *Edit* to open an extra dialog for a number of choices about naming variables.
- **Job Name:** Allows a name change.
- A post-export option
- An **Additional Output** option

Presets can be edited to provide a very wide range of possibilities. See specific sections in this manual about *Output* and *Name presets* to learn more about this powerful aspect of Phocus.

Tip

Hide the Toolbar by clicking on the button located on the top right of the menu (Mac).



Export New Images Automatically

You can speed up the export of files by using the *Export New Images Automatically* function. A selected folder (any folder, new or already existing) is classified as a 'hot' folder where placed files can be individually or mass processed according to a set of chosen options that apply specifically to that folder.

The folder can be used as a 'drag-and-drop' folder or as an import folder. Even the *Capture Folder* can be classified as a 'hot' folder if you wish.

Proceed as follows:

1. Choose **Toolbar > Export 1** to reveal an options window.
2. Go through the options **2** ensuring that all the settings are correct to produce the type of file required.
3. Choose **File Browser 3** to either select a current folder or create a new folder (named "Auto Export" in this example). *Whichever you choose to do, ensure that the folder remains selected.*
4. Choose **Menu > File > Export New Images Automatically 4**.

New tethered captures can be automatically exported from the selected folder if you right click it and then select *Use as Capture Destination* from the options.

Alternatively you can drag and drop captures from any folder **5** into the new *Auto Export* folder **6** for immediate processing and dispatch to the *Export* folder **7**.

Just remember that all files placed in this 'hot' folder will be exported according to the settings originally chosen in step **2**.

Tip

Files can be exported directly from the browser via an options list by **Ctrl clicking** / **right clicking** thumbnails.

Be aware, however, that many advantages of Phocus will be lost by exporting 3FR files directly. See FAQ chapter for details.

Tip

A tethered camera can also act as a card reader.

It will appear as an icon under Devices in the File Browser. Click on the disclosure triangle to see the Capture folder. Then click on the folder to display the captures directly in the Thumbnail Browser.

Tip

Whenever any imports or exports are active you will see a status bar at the bottom of the File Browser showing the number of remaining exports and imports.

The Queue tool will also show the progress of imported/exported files.

Tip

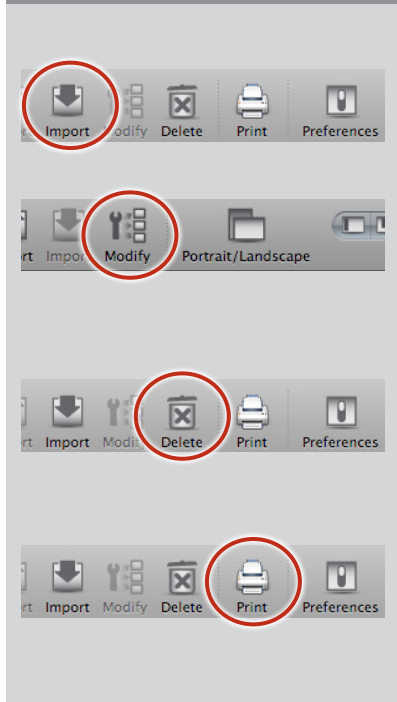
The Preferences menu allows setting the Embedded Preview Size. Choosing a Large or Extra Large preview size is recommended for optimal preview viewing quality in Phocus. However, this will affect file size and performance on older platforms.

Tip

Double click a 3FR thumbnail to immediately import it and open it in Viewer.

Tip

In Preferences you can select a specific layout that is activated automatically when a camera is connected or CF-card inserted.



Import

See *Import* in previous section and *Adjustments* in the following section.

Modify

Opens a dialog offering a list of choices for batch modification of selected (shift clicked) thumbnails.

See illustrations below.

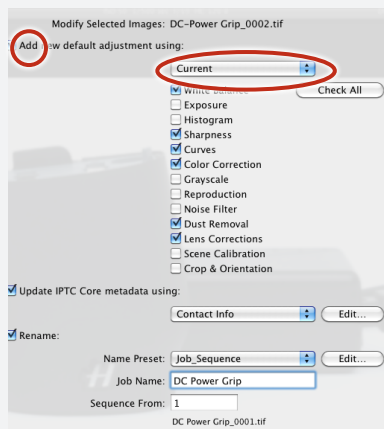
Delete

Sends selected image directly to the Trash. Alternatively press delete or backspace on the keyboard. In these two cases a dialog opens for approval before trashing the files.

Print

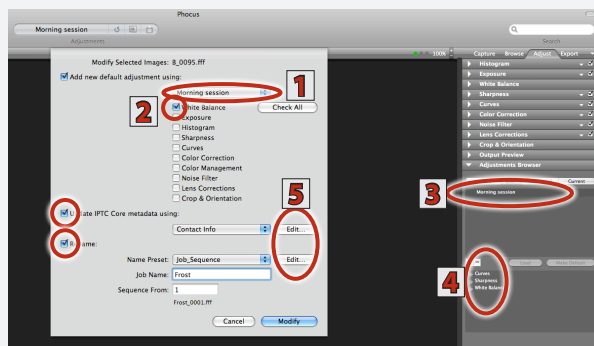
Dialog offers not only the standard printer choice but also PDF and Preview opportunities. See special section on following page for more details.

Modify



Click on *Modify* ($\uparrow + \text{⌘} + m$ / $\text{Ctrl} + m$) in the *Toolbar* to open the options. A menu offers presets such as *Portrait*, *Product* etc. Alternatively, individual tools can be checked on and off for more individual adjustments.

Current and your custom presets also appear as choices via this menu.



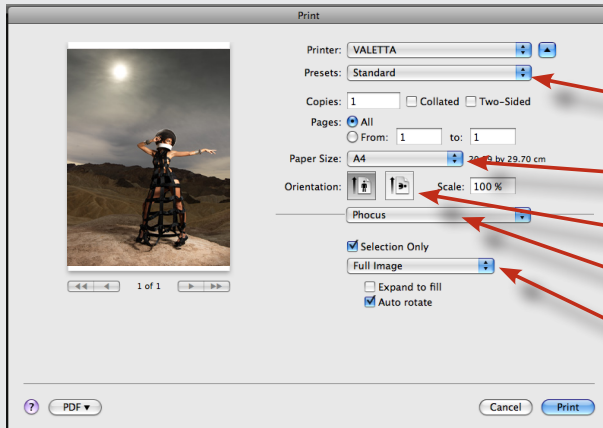
In this example, a custom preset **1** has been used plus *White Balance* **2**.

(Note also in this example, the *Adjustments Browser* **3** remains open from a previous save with the same preset, so the adjustment tool list **4** can be checked regarding content).

Both *IPTC Core* and *Name* options can be opened for updates by checking the boxes and clicking on the *Edit* buttons **5**.

Print

The **Print** dialog offers a list of possibilities to cover a variety of requirements. Below are just examples of what is available.



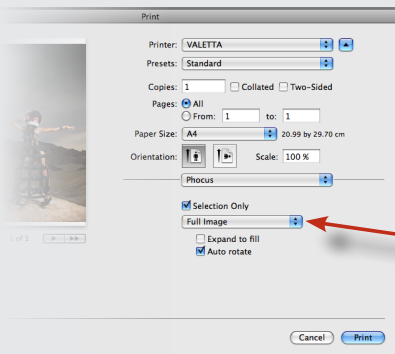
Select any presets you have stored

Select paper size

Select orientation of image on paper

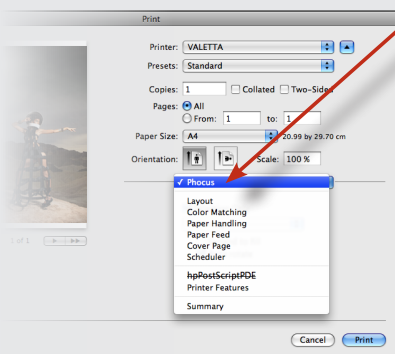
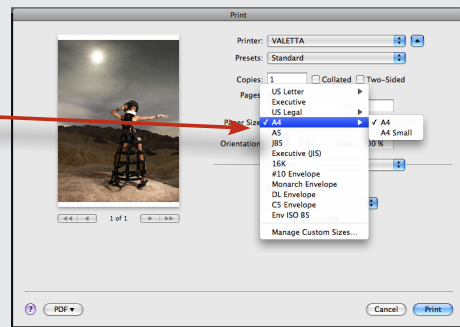
Select from a number of advanced controls

Select between single image or contact sheet



Click here to reveal a list of conventional as well as custom sizes.

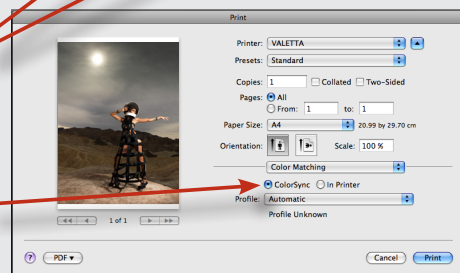
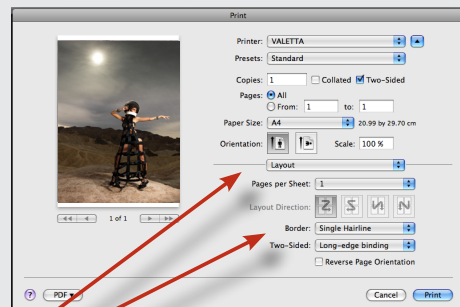
Click here to choose between Full Image or Contact Sheet.



Click here to reveal a list of more advanced controls.

Here, layout has been selected to provide layout choice and thin border.

Here, Color Matching has been selected to provide color management control.





Preferences

Open preferences by choosing:

- **Toolbar > Preferences**
- **Menu > Phocus > Preferences**
- (⌘+,) *Mac only*

The dialog has three tabs: *General*, *Triggers* and *Mobile (Mac only)*. They are accessed by clicking on the appropriate icon.

General:

Embedded Preview Size: *Small, Medium, Large* and *Extra Large* (default setting: *Medium*). Note that a *Large* setting, for example, will increase the quality of the embedded preview as displayed in *Viewer* but will also increase its size and therefore requirements of computing power regarding screen redraw speed.

Ixpress Initial Approval Level: Sets the approval rating of incoming files from Ixpress units. Files from other models automatically retain the default approval level already assigned.

Save adjustments: Sets how adjustments are saved (default setting: *Always Save*).

Manually - requires you to save each time you decide is necessary.

Ask before saving - displays a dialog for you to check each time a save is attempted.

Always Save - saves the current adjustments

Flash Delay (s): delays next capture to allow time for older flash systems to regenerate correctly for next capture when using *Multi-Shot*.

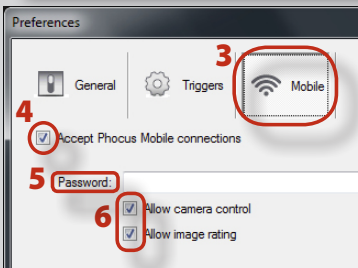
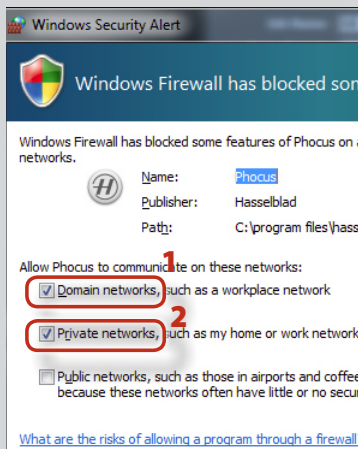
Image Editor: Click *Select* to choose the application you want to work with for further editing of images. Double-clicking on an image in the *Queue* (after it has been processed/exported) will then open it in the selected software.

Autocrop H4D-60 HCD images: Automatically crops images from H4D-60 /HCD lens combinations.

Triggers:

Sets the choice of layout that can be automatically initiated, if required. Choose the appropriate action, then click on the drop down menu alongside to select the chosen layout. For example, you may prefer to see the *Thumbnails Only* layout when a CF-card is inserted, if so, just select *CF-Card Inserted > Thumbnails Only*. The view will then automatically change to *Thumbnails Only* when a CF-card is inserted. Remember that you can create your own layouts for various situations as described in the **Layout Overview** section of this manual.

Tool Set: Sets the layout (default or customized) that can be initiated by Option clicking (*Alt/Ctrl + Alt*) a Tool tab. For example, you may prefer to hide the *Thumbnails* and *File Browser* when making *Adjustments*. By making the appropriate selections, the layout will automatically change to *Viewer* only when you make an Option click on the *Adjustment tab* in the *Tool palette*.



Mobile:

A special version of Phocus – **Phocus Mobile** – is available for the Apple iPhone®, iPad® and iPod Touch®. It offers the option of wireless connection enabling users to remotely browse, zoom and rate images. This allows individuals to view images on separate electronic devices rather than gathering around a single computer.

Phocus Mobile also allows users to remotely operate and trigger a tethered camera, providing control of exposure mode, f/stop, shutter speed, ISO, metering mode and other important capture information, all presented on a virtual camera display. This is additionally particularly useful when the camera is located in a difficult-to-access position.

Phocus Mobile setup

Phocus Mobile is available free of charge from the Apple App store and will automatically be installed onto your chosen device. Windows setups may additionally require changes to the Windows firewall setting; see note below.

Phocus Mobile and Windows

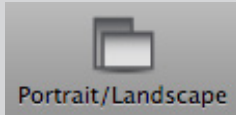
On the Windows platform, **Phocus Mobile** utilizes **Apple Bonjour** (version 2.0.2 or later) and so this must be installed first. **Apple Bonjour** is a local service discovery application (to enable local wireless connections) that is an integral part of the Apple computer operative system that also works with Windows. It is automatically installed with **Apple iTunes** but can also be separately downloaded from the Apple support website.

It is advisable to update your Windows system with the latest service packs before installation. The Windows firewall will probably have to be manually set to allow **Phocus** to communicate with **Phocus Mobile**. Typically this would mean that a firewall prompt dialog will appear on the first launch of **Phocus Mobile** where you should check *Domain networks ...* (1) and *Private networks ...* (2) to allow connection. However, due to the variety of possible Windows configurations, connection issues may still occur. In these instances you should verify the correct installation of **Apple Bonjour** in the *Computer Management > Services and Applications > Services* window.

Enabling Phocus Mobile (Mac and Windows)

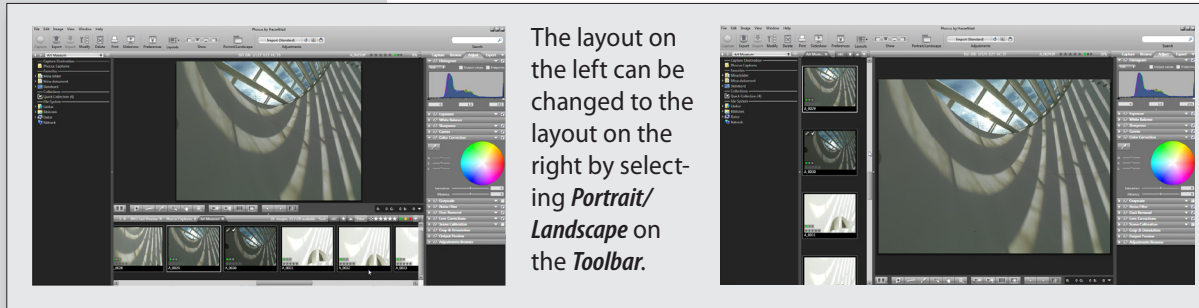
1. With Phocus running, open *Preferences* and then click on the **Mobile** (3) tab.
3. Check *Accept Phocus Mobile connections* (4).
3. Write a password (5) if you want to prevent undesired mobile access to Phocus (optional).
4. Decide whether you want to allow remote camera control and/or image rating (6) and check accordingly.
5. Click *OK* and open *Phocus Mobile*.

Layout options on the Toolbar



Portrait /Landscape

Switches the layout of the *Viewer* and the *Thumbnail Browser* from landscape (default) to portrait or vice versa (toggle function). Useful for exploiting viewing area on screen. See example below.

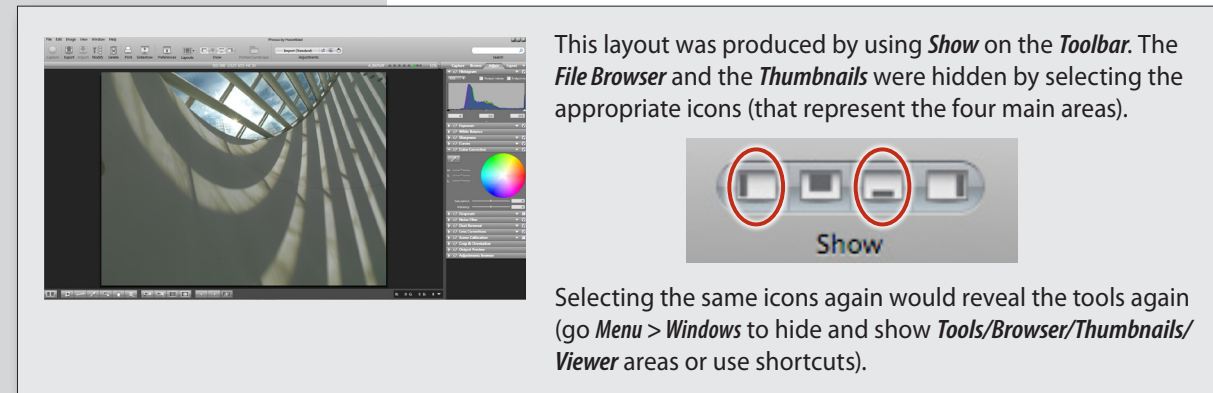


The layout on the left can be changed to the layout on the right by selecting *Portrait/Landscape* on the *Toolbar*.



Show

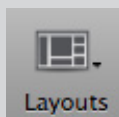
Show (chosen via *Customize Toolbar* on Mac platforms; default on Windows) offers four rapid hide/show buttons for the *Browser*, *Viewer*, *Thumbnails* and *Tools* panels. See example below.



This layout was produced by using *Show* on the *Toolbar*. The *File Browser* and the *Thumbnails* were hidden by selecting the appropriate icons (that represent the four main areas).

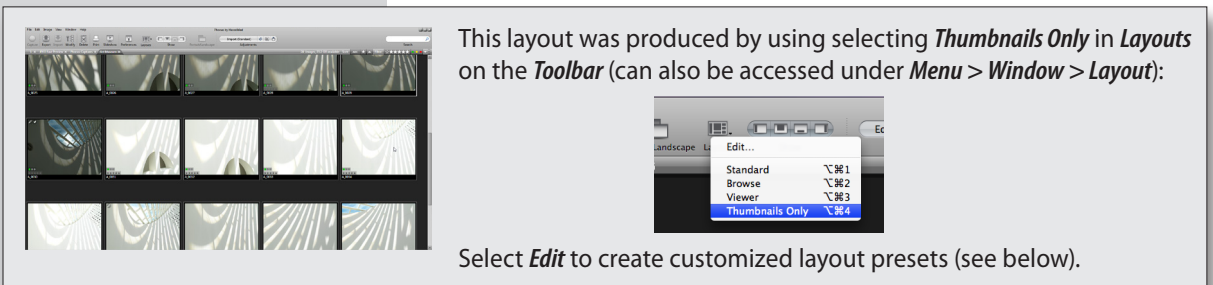


Selecting the same icons again would reveal the tools again (go *Menu > Windows* to hide and show *Tools/Browser/Thumbnails/Viewer* areas or use shortcuts).

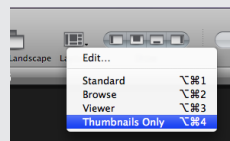


Layouts

Layouts (dialog) allows you to select one of four factory defined layouts (with changeable shortcuts), customized user created layouts as well as defining layout arrangements and content.



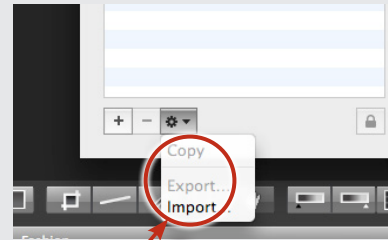
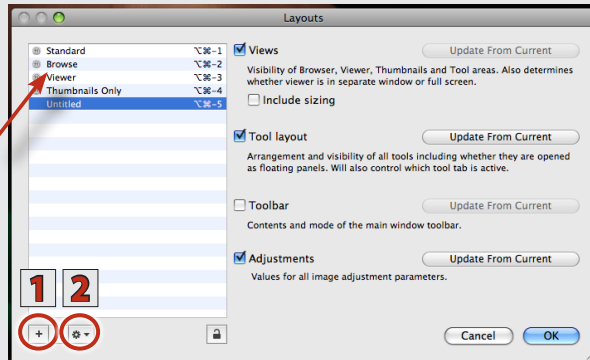
This layout was produced by using selecting *Thumbnails Only* in *Layouts* on the *Toolbar* (can also be accessed under *Menu > Window > Layout*):



Select *Edit* to create customized layout presets (see below).

Working with Layouts in Phocus

Drag and drop presets up or down the list to change their shortcuts



Layout presets are imported and exported here to ensure rapid and secure workflow.

Choose **Toolbar > Layouts > Edit** (or **Menu > Window > Layout > Edit**) to open the dialog containing many options under four headings: **Views**, **Tool Layout**, **Toolbar** and **Adjustments**.

Only current settings can be saved. Click the **Update From Current** buttons for each group to include those settings. A disabled **Update From Current** button implies that the setting already complies with the current state.

Views: This section determines which of the four main areas are to be included. Also determines whether the viewer appears on a separate window or appears in full screen view. Check the **Include sizing** box if you want to retain the size of the areas.

Tool Layout: Determines which tools are to be included in regard to their position on the lists under the tabs, whether they are open, closed or floating and whether they are active or not.

Toolbar: Sets the contents and mode of the **Viewer** toolbar.

Adjustments: Sets the parameter values of all adjustments used.

In addition, layout choice can be triggered by specific actions in order to automate various proceedings (see **Preferences** for details).

When settings are complete, click on the plus sign **1** to create a new layout on the list (minus to delete a file) containing the required settings of one, several or all groups.

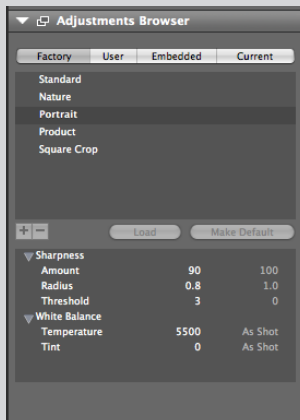
Name the file and then click on the action button **2** to copy it or export it **3**. Previously saved settings can also be imported here. Change the shortcut if required by shuffling/deleting the list names.

Preset layouts can be recalled for specific working situations on your platform and exported/imported to/from other workstations. They improve workflow considerably as less time is needed for orientation and the checking of settings.

Adjustments

Adjustments can facilitate workflow and add security and rapidity to a sometimes risky and time-consuming aspect of file management.

Adjustments – editing management



Note

Current only illustrates the current state regarding accumulated edits. It does **not** necessarily imply the current state has been saved.

Note

You must press Load (or Return) to apply a selected preset.

Note

Only **saved** adjustments appear on the Embedded list.

By exploiting the possibilities that Phocus offers you can not only save a great deal of time but improve the efficiency and security in this area of your workflow when editing images.

In Phocus, edits can be applied singly or collectively. Sets of edits are referred to as *Adjustments*.

Note that an *Adjustment* is an internal function within Phocus only. When the file is exported into another format it has the desired edit instructions applied to the exported file. That is, all edits are nondestructive in Phocus and so 3F files remain unaffected and can be recalled at a later date as identical as they were when first processed from the raw data. So, in simple terms, you cannot "press the wrong button" in Phocus because the original file always remains.

As you apply each edit (color balance, curves, exposure, etc.) you can progressively build up a history of the changes made. When you are satisfied with your choice of modifications, you can save the collective changes as *Adjustments*. These are added to and stored inside the raw file to become *Embedded*. (It is by way of the *Embedded* list that you can revert back to any stage of image development that you wish).

Adjustments can also be saved for future use on other files and will appear beneath the *User* heading. *Adjustments* can also be applied simultaneously to a whole batch of files by using the *Modify* tool. This means you can always go back to something you preferred a few minutes ago or back to something you preferred several months ago, for example. In that way, a whole folder of captures can be simultaneously edited in exactly the same way, securely and automatically, in accordance with your own or your clients preferences, for example.

Adjustments can also be imported and exported. This feature is very useful for sharing, when on location, when renting equipment etc.

As a starting point, Phocus has some *Factory* presets that can either be used directly or as a basis for additional fine-tuning and saving as customized presets.

.....

There are a number of controls that exploit the underlying *Adjustments* concept:

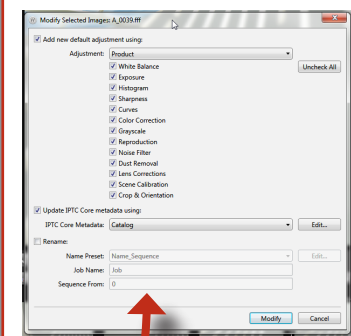
- A dialog for applying adjustments during image import.
- A *Modify* function for applying adjustments to a batch of images.
- Options for how current adjustments are saved (*Ask Before Saving*, etc.)
- A tool for managing adjustments.
- A *Save changes* button that saves current adjustments.
- A *Copy to User* function that saves current adjustments as custom presets.

Therefore, it is advisable to build up your understanding of *Adjustments* to see how they can work for you in your situation and improve your workflow.

See the following chart for an overview of the the idea behind *Adjustments*.

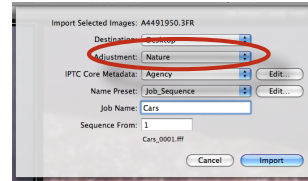
Adjustments – overview

This simplified overview illustrates the interrelation of some of the adjustments functions between four tools. There are many settings that are shared. Presets can be exploited using any of these four tools.



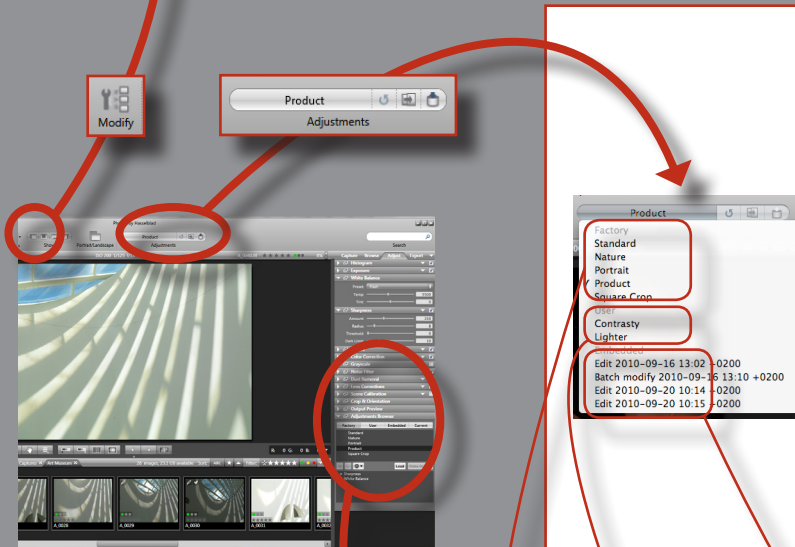
Modify

The **Modify** dialog is used for rapid and automatic batch processing. It uses adjustment presets that can be temporarily customized if required. IPTC data and file naming can also be batch changed in this dialog.



Import

The **Import** dialog allows you to apply **Adjustments** to images when they are imported.



Adjustments window

The **Adjustments** window is a visible reminder of the current preset or save, according to the image in the Viewer.

It also displays a list of presets and saves under the three headings: **Factory**, **User** and **Embedded**.

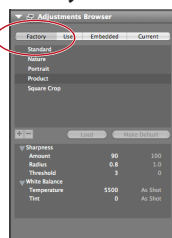
It mirrors the information (except settings) also visible in the **Adjustment Browser**.

Adjustments Browser

This tool acts as an **Adjustment** multi-tool and information check system. It provides four separate and very useful groups of information – **Factory**, **User**, **Embedded** and **Current**.

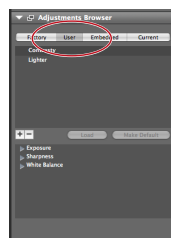
Customized presets are also created with this tool and saved either as new presets or as default presets.

Factory



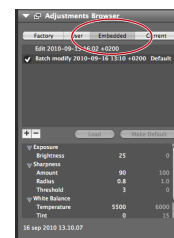
Factory lists several presets as starting points.

User



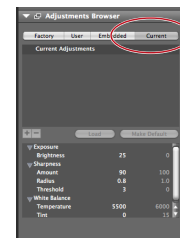
User lists custom made **Adjustments** for global use.

Embedded

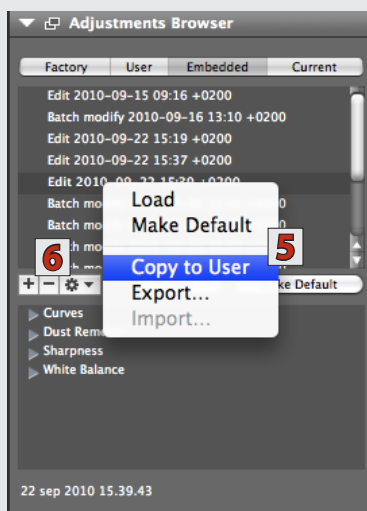
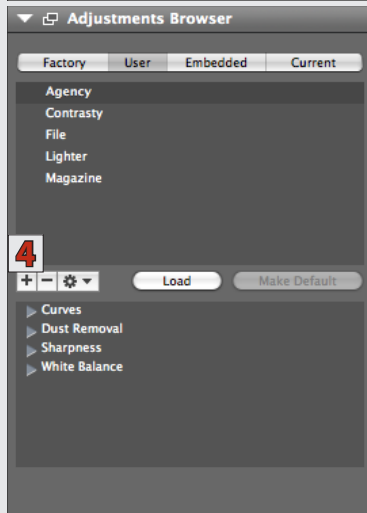
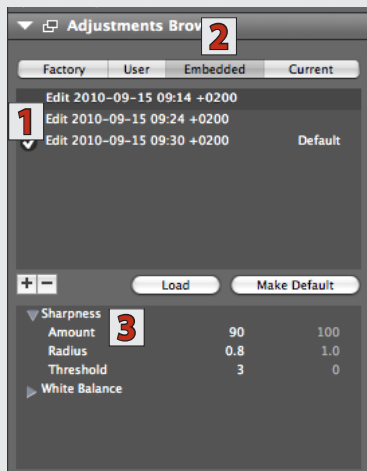


Embedded lists the history of saved adjustments within the selected file.

Current



Current lists the tools and settings currently in use.



Adjustments Browser

In the example shown here, an adjustment **1** under the *Embedded* heading **2**, has been selected. An activated disclosure triangle in the view beneath **3**, reveals the details of the *Sharpness* settings that were in use at the time the adjustment was applied to the image.

Adjustments – categories

Open the *Adjustment Browser* tool and click on the appropriate heading. The lower section displays the settings of the tools used for the selected adjustment (revealed by disclosure triangles). Note this means the adjustment you have just selected, not necessarily the adjustment in use with the corresponding results visible in the *Viewer*. Also note that any selected adjustment must be **loaded** to take effect, selecting alone will not apply any changes.

Factory: These are the standard adjustments provided with Phocus. They can be either used directly or for creating a customized adjustment which is listed beneath the *User* heading.

- Standard:** *No edits*
- Nature:** *Curves – RGB*
Sharpness – Amount 180, Radius 0.8
White Balance – Temp 5500, Tint 10
- Portrait:** *Sharpness – Amount 90, Radius 0.8, Threshold 3*
White Balance – Temp 5500, Tint 0
- Product:** *Sharpness – Amount 350, Radius 0.8*
White Balance – Temp 5500, Tint 0
- Square Crop:** *Crop (60Mpix model only)*

User: Displays user-defined adjustments that can be used globally for use with any other images. These are generated either by clicking the plus sign **4** in the *User* menu which will store an adjustment with the actual saved settings present or by selecting an adjustment beneath the *Embedded* heading, right-clicking and then choosing *Copy to User* **5**.

A preset can be deleted by clicking the minus sign **6**. Double-click the new preset to re-name it.

Embedded: Displays a history of saved (embedded) adjustments (note that it is not a list of edits you may have tried and not saved). These are added to the list each time changes are saved. The adjustments last saved with the current file are marked as *default*. A check mark in front of an adjustment shows that it is applied to the current file. If you want to save an *Embedded* adjustment for use with other images, either right click the selected adjustment and select *Copy to User* or under the *User* heading, click on the plus sign to copy the original embedded adjustment. Either way you can then double click the new adjustment in *User* and rename it (advisable).

All embedded adjustments are stored directly within a 3F file. With other file formats, adjustments are stored in sidecar files. If files are moved within Phocus, then the adjustments are automatically transferred too. However, if files are copied outside of Phocus or to another computer/storage device then you should ensure that the appropriate sidecar files are copied too in the case of other formats. 3F files remain unaffected with regard to copying as they always retain their integral adjustment history.

Current: This represents the current total set of adjustments for the selected image. It therefore visually illustrates the effect on the current image made by any loaded adjustment plus any changes made afterwards. Note that the *Current* set of adjustments might not necessarily have been saved as an adjustment at this point. Can also generate a *User* setting.

Transferring Adjustments

Both *Embedded* and *Current* adjustments can be copied to *User* as custom presets by right clicking the selected adjustment and choosing *Copy to User*.

Adjustment Preferences

Under *Preferences* (in the *Toolbar*) you can choose how the current adjustments are to be saved when browsing to the next image.

The options are *Manually*, *Ask Before Saving* and *Always Save* (recommended).

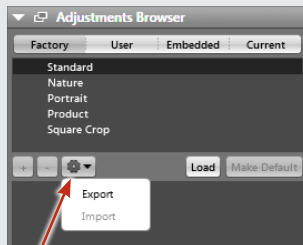
Saving adjustments

You can save any changes made by pressing the *Save changes* 1 button in the *Adjustments Window* on the *Toolbar* or use the shortcut – $\text{⌘} + \text{S}$ / $\text{Ctrl} + \text{⌘} + \text{S}$. This generates a new set of adjustments on the *Embedded* list.

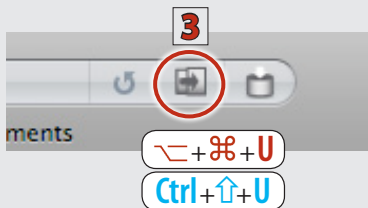
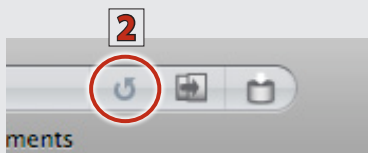
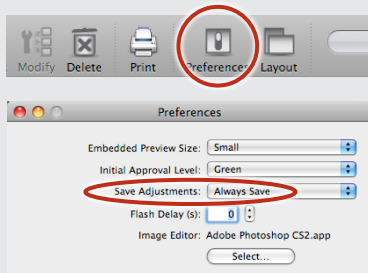
You can revert from any edits made simply by pressing the *Reload* button 2 in the *Adjustments Window* (if you haven't made a save as this creates a set and automatically greys out the *Reload* button).

A recently saved adjustment can also be used on a new image by pressing the *Use last saved adjustment* button 3 or use the shortcut – $\text{⌘} + \text{U}$ / $\text{Ctrl} + \text{⌘} + \text{U}$.

In this way, the *Adjustment Window* section of the *Toolbar* also acts as a shortcut to directly choose – or change your choice of – adjustments (as a quick alternative to going through the longer process of selecting and loading new adjustments from the *Adjustments Browser* tool).

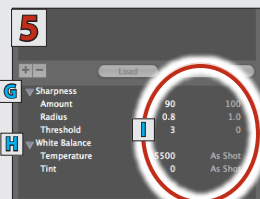
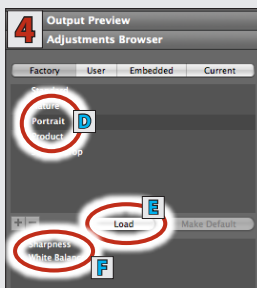
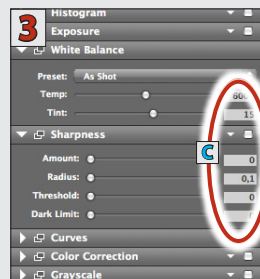
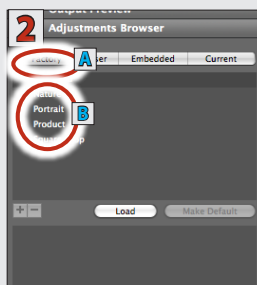


Adjustments can also be imported and exported.



In this example a portrait is chosen and adjustments applied to demonstrate how adjustments can help smooth out the workflow process.

Both single images and batch processing of multiple images can be adjusted this way.



1. For this example, make sure the **Viewer, Thumbnail Browser and Tools** are displayed. Select a file to appear in the **Viewer**.

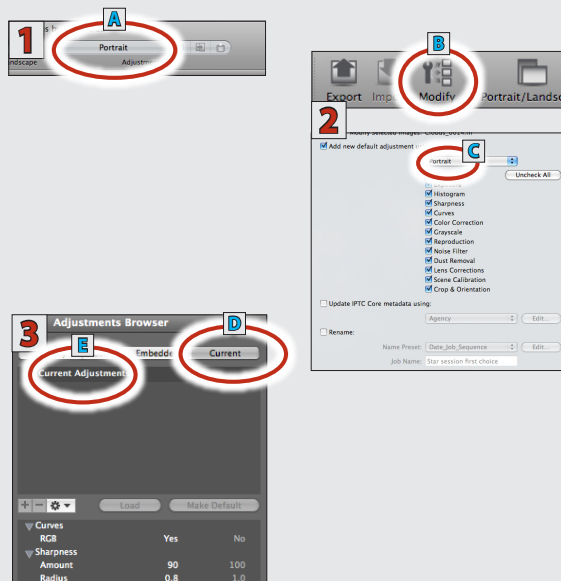
2. Open the **Adjustments Browser** tool and click on the **Factory** heading **A** to display the **Factory presets B**.

3. Open the **White Balance** and the **Sharpness** tools (note the current settings **C**).

4. Back in the **Adjustments Browser** under the **Factory** heading, click on the "Portrait" preset **D** then click on **Load E**. You will see that **Sharpness** and **White Balance F** now appear in the lower window.

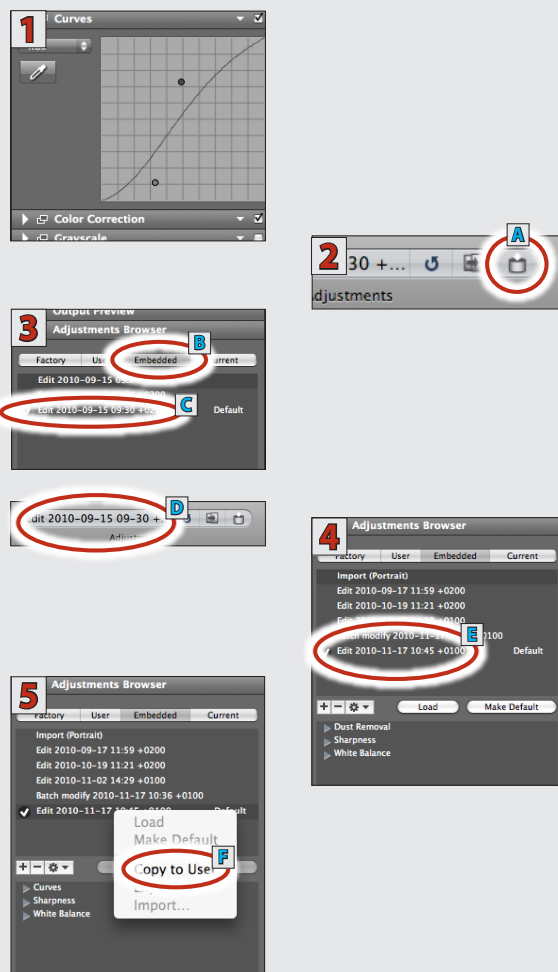
5. In the lower window of the **Adjustments Browser**, click on the disclosure triangles **G** and **H** and to see the settings – **Sharpness** (amount 90, radius 0.8, threshold 3) and **White Balance I** (Temperature 5500, Tint 0).

6. If you now look back again at the **White Balance** and the **Sharpness** tools, you will see that the new settings **J** (as shown in 5 above in the **Adjustments Browser**) have now been transferred to these tools thereby applying their effects on the image in the **Viewer**.



Continuing from the previous example, observe the following:

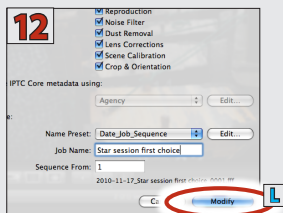
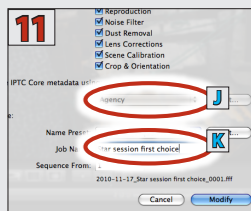
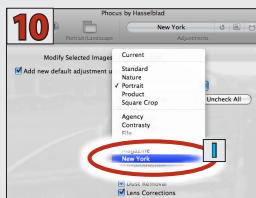
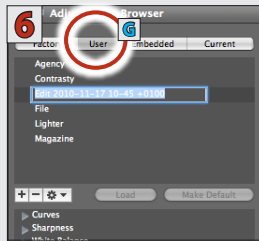
1. If you now look at the **Adjustment window on the Toolbar** you will see "Portrait" **A**. This provides a constant visual reminder of the adjustment in use for the selected image.
2. If you click on **Modify B** on the **Toolbar** the menu in the **Modify dialog** also now lists "Portrait" **C** for selection. This provides the opportunity to batch modify a group of images using the identical adjustments for all, automatically.
3. If you click on the **Current D** heading in the **Adjustments Browser** tool you will see "Current Adjustments" **E**. The lower panel now displays the current settings details allowing you to inspect them for approval (in this case it is **Sharpness** and **White Balance** from the "Portrait" preset plus an additional edit of **Curves**, see below).



To continue even further, this example shows how a factory preset is customized, saved, renamed and used as a new modifying preset for a batch of images.

1. Having applied "Portrait" to the selected image as in the first example, open the **Curve** tool and make a change.
2. Save the change by clicking the **Save** button **A** on the **Toolbar** (which then dims to signify that a change has been saved).
3. Click on the **Embedded B** heading in the **Adjustments Browser** tool to display the new setting which is named with the date and time **C**. (Notice that the **Adjustment window D** on the **Toolbar** bar displays the same name now).
4. Back in the **Adjustment Browser**, select the latest saved adjustment **E** and right click it to reveal a pop up menu.
5. Select **Copy to User F** from the menu.

Adjustments – an example



6. The new adjustment now automatically appears under the **User G** heading as a new customized preset (named here with the same date and time as when saved).

7. You can now rename it by clicking on it first to highlight it. In this example it is renamed to "New York".

8. In the **Thumbnails Browser** select the files you want to change.

9. Click on **Modify H** on the **Toolbar** to display the dialog.

10. On the droplist in the **Modify** dialog, select the desired saved adjustment **I** ("New York" - in this case).

11. Also in the **Modify** dialog, you can include some extra IPTC data and rename the files. In this case, a previous IPTC preset is chosen **J** and the files are renamed **K**.

12. Finally, click on the **Modify L** button.

To sum up, you have now:

- used a preset to securely make previously approved edits.
- added to that preset to create a new customized preset.
- renamed the new customized preset for future use.
- altered the IPTC information for inclusion with the newly modified files.
- renamed the newly modified files.

In this way you can modify batches of very finely tuned files quickly, easily and securely.

Tip

There several ways of exploiting the actions within Adjustments and you should investigate the possibilities that would suit your particular preferences.

Menu

As well as the operating system requirements, the Menu contains several Phocus-specific items: Image, View, Window (all listing several keyboard shortcuts) and Help.

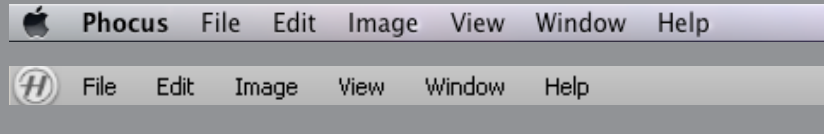
Macintosh

⌘ = Command
 ⌥ = Alt
 ⌘ = Control
 ⇧ = Shift

Windows

⇧ = Shift

Menu Shortcuts



MAC	WIN
-----	-----

⌘+,	(see under File)
⌘+H	
⌘+Q	(see under File)
⌘+M	Alt+space + M
⌘+N	Ctrl+N
⌘+W	Alt+F4
⌘+S	Ctrl+S
⌘+⇧+S	Ctrl+⇧+E
⇧+⌘+I	Ctrl+I
⇧+⌘+M	Ctrl+M
⌘+P	Ctrl+P
(see under Phocus)	Alt+F, then R
(see under Phocus)	Alt+F4
⌘+⇧+⌫	⇧+Del
⇧+⌫	Del
⌘+Z	Ctrl+Z
⇧+⌘+Z	Ctrl+Y
⌘+X	Ctrl+X
⌘+C	Ctrl+C

Phocus (Mac only)

Preferences

Hide Phocus: Hides the application.

Quit Phocus: Closes the application.

Minimize Phocus (English operative system only)

File

Capture: Triggers a tethered camera.

Close: Closes the active window. Also closes application (*Win only*).

Export: Exports the current image.

Export as Previous: Exports the current file with the same settings as the preceding file, thereby avoiding the export dialog.

Import: Imports the selected file.

Modify: Accesses the Modify dialog.

Print: Accesses print dialog.

Preferences: Opens the Preferences menu (*English operative system only*).

Exit: Closes the application

Force Delete

Delete

Edit

Undo

Redo

Cut

Copy

⌘+V Ctrl+V

Ctrl+F

⌘+A Ctrl+A

⇧+⌘+A Ctrl+⇧+A

⌘+B Ctrl+B

⌘+D Ctrl+⇧+D

⌘+⌥+S Ctrl+⇧+S

⌘+⌥+R Ctrl+⇧+R

⇧+⌘+U Ctrl+⇧+U

⌘+⌥+M Ctrl+⇧+M

⇧+⌘+L Alt+⇧+L

⌘+⌥+G Ctrl+G

⌘+⇧+G Ctrl+⇧+G

⌘+⌥+O Ctrl+O

⌘+⇧+O Ctrl+⇧+O

⇧+⇧+⌘+S Ctrl+D

⌘+⌥+H Ctrl+H

⌘+⌥+W Ctrl+W

Paste

Find

Select All

Deselect All

Image

Add/Remove from Quick Collection: Affects selected images in the *Thumbnail Browser*.

Remove Crop: Reverts image back to original content.

Save Adjustments: Saves any adjustments made to currently selected image. Adds adjustment icon to lower right of title bar below thumbnail.

Reload Adjustments: Reloads previous adjustments.

Use Last Saved Adjustments: Reloads the *Adjustment Preset* present when the image was opened in the *Viewer*. Same function as *Reload* button.

Map: Opens 'Google Earth' when online, to reveal selected capture's location. Requires the use of the Hasselblad GIL accessory at time of capture.

Slideshow: Allows selected thumbnails to appear as slideshow.

View

Grid: Applies a grid pattern on top of the image in the *Viewer*.

Grid Options: Opens a dialog to allow adjustments to the number of lines that make up the grid as well as their color.

Overlay: Overlays a selected file on top of image in *Viewer*.

Overlay Options: Opens a dialog to allow opacity and scale adjustments to overlay file. Also prompts selection of overlay file.

Shadow Warning: Marks areas of the image in the *Viewer* that are rated as under-exposed. These areas appear as light magenta (default) and cover the affected areas of image below. Also accessible on *Viewer Toolbar* as *Mark underexposed*.

Highlight Warning: Marks areas of the image in the *Viewer* that are rated as over-exposed. These areas appear as light cyan (default) and cover the affected areas of image below. Also accessible on *Viewer Toolbar* as *Mark overexposed*.

Warning options: Opens a dialog to allow threshold adjustments to *Shadow Warning* and *Highlight Warning*.

→ →

← ←

⌘+⬆+C

⌘+ + Ctrl+ +

⌘+ - Ctrl+ -

⌘+ 0 Ctrl+ 0

⌘+⌘+0 Ctrl+ Alt+ 0

⬆+⌘+ + ⬆+Ctrl+ +

⬆+⌘+ - ⬆+Ctrl+ -

⬆+⌘+ 0

⌘+L Ctrl+L

⌘+⌘+⌘+A Ctrl+⬆+L

⌘+⬆+⌘+C

⌘+ M Alt+ space+M

⌘+⌘+M Windows key+M

⌘+⌘+T ⬆+Ctrl+T

⌘+⌘+B ⬆+Ctrl+B

⌘+⌘+N ⬆+Ctrl+N

⌘+⌘+V ⬆+Ctrl+V

Next Image: Displays the capture to the right (in Landscape mode) of the selected image in the *Thumbnail Browser*, replacing the current image in the *Viewer*. Also accessible on *Viewer Toolbar*.

Previous Image: Displays the capture to the left (in Landscape mode) of the selected image in the *Thumbnail Browser*, replacing the current image in the *Viewer*. Also accessible on *Viewer Toolbar*.

Compare Image

Zoom In: Doubles the image size in the *Viewer* by 100% increments (50% → 100% → 200% etc). (*Zoom tool on Viewer Toolbar produces a 100% enlargement directly*).

Zoom Out: Reduces an enlarged image in the *Viewer* in 100% increments (200% → 100% → 50% etc).

Fit to Window: Chooses the appropriate size of image to fit in *Viewer* area (By default, the image size is adjusted to fit the *Viewer* area.)

Zoom to 100%: Enlarges image to 100% regardless of current *Viewer* area.

Larger Thumbnails

Smaller Thumbnails

Fit Thumbnails

Live Video: Produces a continually updated image in the *Viewer*. Functions only with tethered operation in studio-like environments.

⌘+ +/-(tool) Ctrl+ +/-(tool) *Fine focus-adjustment*

Alt+ +/-(tool) Alt+ +/-(tool) *Large focus-adjustment*

Live Video Audio Feedback: Produces an audio tone that notifies the accuracy of the lens focus setting.

Show New Captures in Viewer

Window

Minimize: Collapses current window to the dock.

Minimize All: Collapses all windows.

Hide/Show Tools: Shows/hides *Tool Area*. Toggle function.

Hide/Show Browser: Shows/hides *File Browser*. Toggle function.

Hide/Show Thumbnails: Shows/hides *Thumbnail Browser* and fills area with an expanded *Viewer*. Toggle function.

Hide/Show Viewer: Shows/hides *Viewer* and fills area with an expanded *Thumbnail Browser*. Toggle function.

⌘+⌥+V ⌘+Ctrl+Alt+V

⌘+F ⌘+Ctrl+F

Ctrl+T

⌘+3 ⌘+Ctrl+1

⌘+4 ⌘+Ctrl+2

⌘+2 ⌘+Ctrl+3

⌘+1 ⌘+Ctrl+4

⌘+9 ⌘+Ctrl+5

⌘+Ctrl+6

⌘+5

⌘+6

⌘+7

⌘+1 Ctrl+1

⌘+2 Ctrl+2

⌘+3 Ctrl+3

⌘+4 Ctrl+4

Viewer in Separate Window: Creates a separate *Viewer* window complete with *Viewer Toolbar*. Replaces *Viewer* area with the *Thumbnail Browser* only. Toggle function.

Full Screen Viewer: Fills whole screen area with *Viewer* complete with *Viewer Toolbar*. Toggle function.

Toggle Portrait/Landscape

Layout: Choose between:

- Standard
- Browse
- Viewer
- Thumbnails only
- Light Mode
- Standard Mode
- Camera
- Card
- Tethered

Layout shortcuts can be reassigned to existing or newly created versions.

See under: Toolbar > Layouts > Edit (or Menu > Window > Layout > Edit).

Tool Set: Choose between:

- Capture
- Browse
- Adjust
- Export

Bring All to Front: Brings *Phocus* and *Viewer* to the front if covered by other applications.

Shortcuts not in Menu

- c / c Crop tool
- d / d Dust removal tool
- h / h Hand tool
- i / i Color picker tool
- l / l Loupe (Navigator tool)
- n / n Neutralization tool
- r / r Straighten tool
- w / w Compare view
- z / z Zoom tool
- Alt + drag / Option + drag Drag overlay
- F5 / F5 Single-shot capture
- F6 / F6 Multi-shot capture

Appendix

- Camera Configurator
- Integration of Eizo self-calibration displays
- Closed Loop Color Calibration
- **Keyboard shortcuts**
- FAQ
- Index

Camera Configuration

The Camera Configuration tool in Phocus offers a very thorough and secure way of creating comprehensive profiles for the H5D. There are three windows – *Controls*, *Exposure* and *General* – that present virtually all parameters to enable total control at the press of a button. This means that separate and specific custom profiles created in advance can cover a number of shooting scenarios leaving virtually nothing to chance. In addition these profiles can be easily imported and exported. For instance, you can create a special profile to suit a specific type of shoot and keep it on a memory stick or laptop. So, when renting an H5D for example, you only have to upload the saved profile to ensure that all parameters have been reset without you having to go through each detail – simple and secure.

The interface has three tabs at the top, *Controls*, *Exposure* and *General*, that access the windows. Descriptive information appears as you mouse over the various menus and extra tool tips are additionally available as an option. To take an example, the *Controls* window is illustrated here. On the left are two lists: *Camera* and *Library*. The *Camera* list includes the various available configuration profiles already stored in the camera – the profile currently in use as well as the default settings and those you have created or imported from other sources. *Library* contains the factory presets stored on disk.

The Camera Configuration interface makes it easy to go through the parameters logically and systematically to prevent you missing important settings.

Controls, Exposure and General tabs

This list describes the settings in current use as well as the profiles already stored in the connected camera.

This list includes the new profiles created in Camera Configurator as well as factory profiles stored on disk.

Import, Export, Transfer, Add Profile etc tools.

Check box to display extended information.

CREATING A PROFILE

- 1) Open Camera Configuration located under the Windows menu.
 - 2) Connect the camera and in the Camera list click on a profile you want to change or a spare profile and name it.
 - 3) Cycle through the three windows, Controls, Exposure and General, making the appropriate selections that you require. When complete, select the new profile and drag and drop or right click it to store in the Library.
 - 4) Right click the Library version of the profile to access the Transfer Profile Set to Camera option then click on OK to complete the action. This causes the new profile to appear on the grip display for selection when you click on the Profiles button.
- Right click a profile in Library to access the Rename, Reset to Standard, Delete and Export options if required. Import, Export, Transfer, Add Profile etc tools are also available.

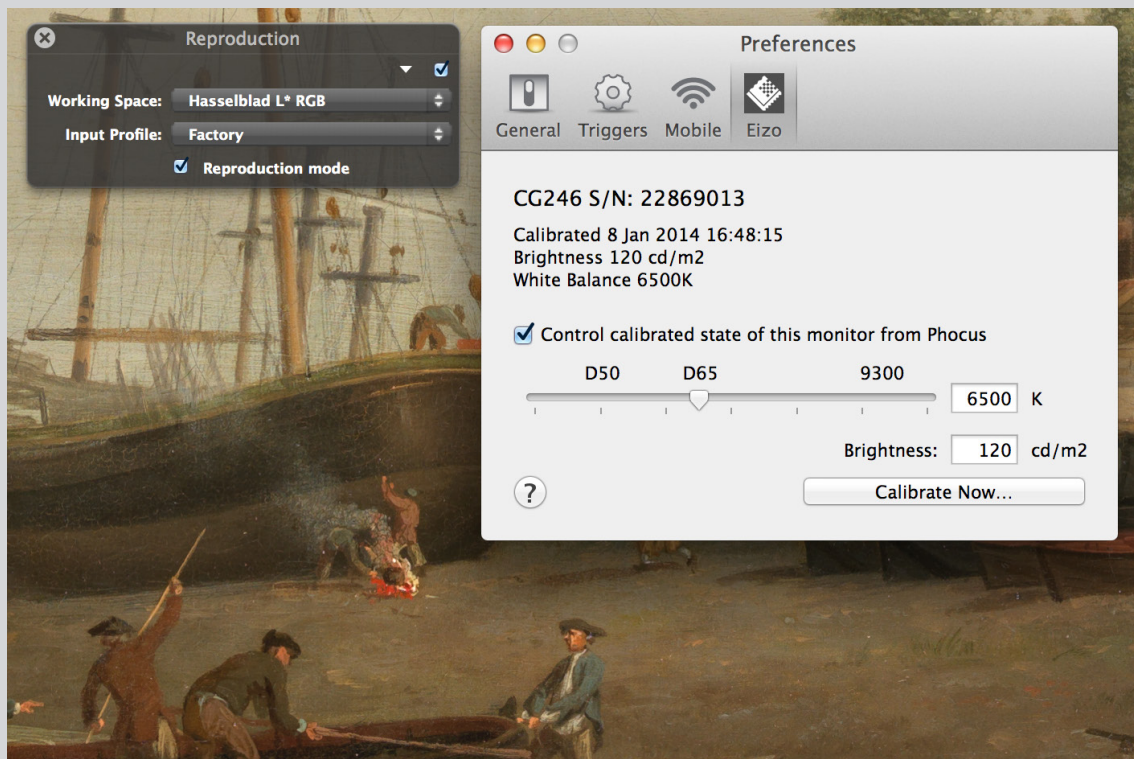
Integration of self-calibrating Eizo displays

Calibration of Eizo displays like the CG318-4K, CG248-4K, CG277 and the CG247 can now be handled directly from Phocus. This ensures that the display is setup to provide the best possible results for the viewing of Hasselblad images.

Once an eligible monitor is connected Phocus will show a dialog asking whether you want to handle calibration. If you choose to do this you will be guided to an extra Eizo tab in the **Preferences** window where it's possible to setup calibration options and start the actual calibration. This preference tab will also let you toggle whether Phocus should handle calibration or not.

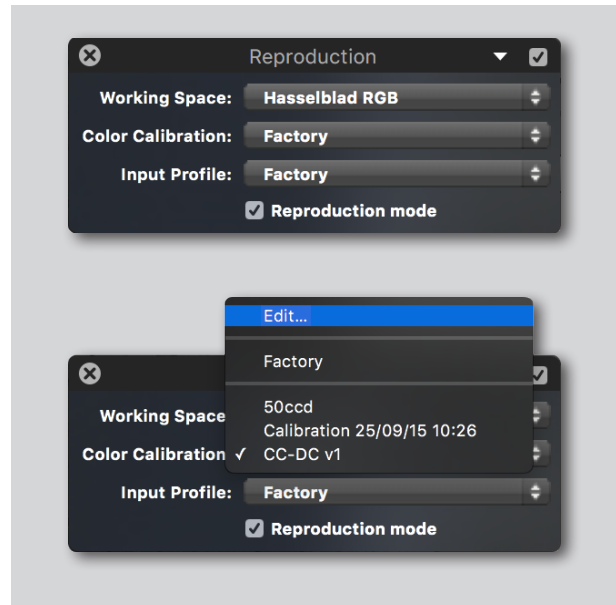
It should be noted that it's not currently possible for us to integrate with calibrations made by Eizo's own **ColorNavigator** software. Therefore once you've made a calibration using Phocus launching ColorNavigator will switch the display back to the last calibration made by itself. When you switch back to running Phocus you will be prompted about this change and will get the opportunity to restore the calibration made by Phocus or alternatively stop handling the calibration from Phocus. In fact just running the ColorNavigator Agent will interfere so we recommend that you switch off that option in the ColorNavigator preferences dialog.

The calibration target chosen by Phocus will of course be optimized to work with our Hasselblad RGB and Hasselblad L*RGB working spaces but it should be noted that the resulting calibration will also work well even if using a somewhat smaller working space like Adobe RGB in Photoshop. However if you routinely view images in much smaller working spaces like sRGB you should make a special calibration for this purpose using the Eizo Color Navigator software.

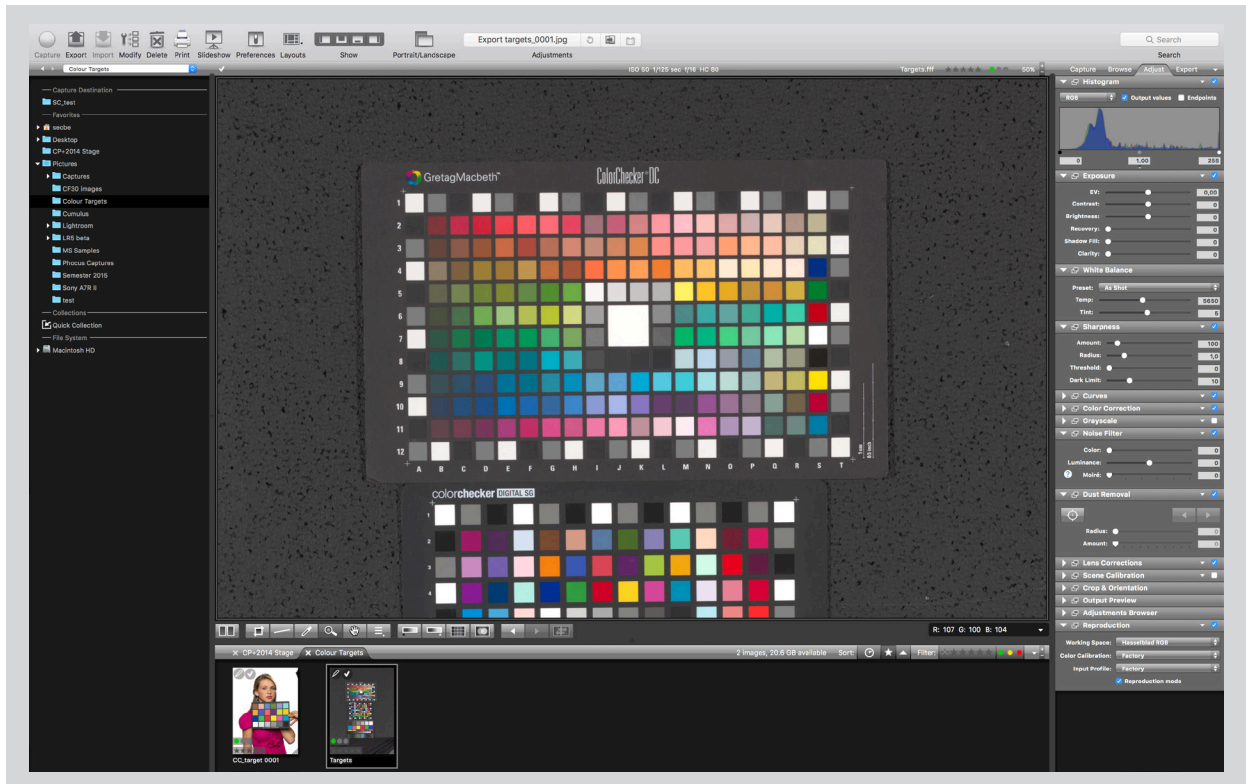


Integrated Colour Calibration

In the **Reproduction tool** a new Colour Calibration popup menu has been added. By default this will say Factory, which corresponds to the same default colour handling used by previous releases of Phocus. In this menu you can select the **Edit** option in order to bring up the Colour Calibrations dialog. Note that this dialog can also be opened via the Window menu where it has the keyboard short cut **alt-cmd-C**.



In order to add a new calibration make sure that a suitable image containing a colour reference chart is shown in the viewer before opening the Colour Calibrations dialog.



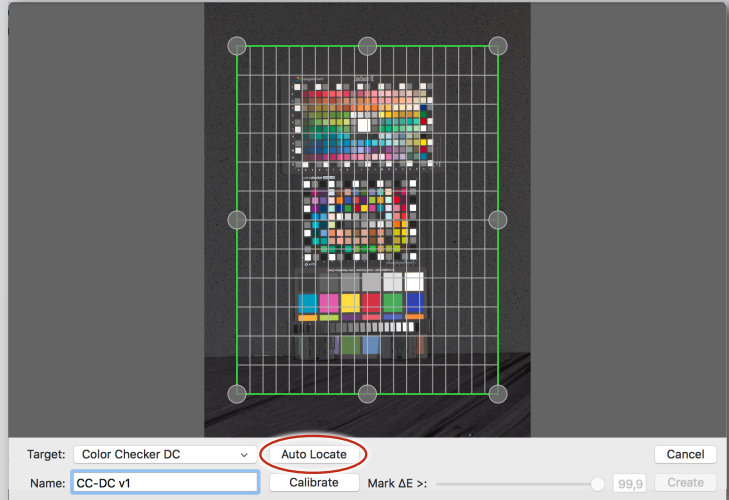
If you have no existing custom calibrations the dialog will move directly on to the calibration interface. Otherwise use the + button on the left (keyboard short cut is +). In the calibration interface you will see the selected image together with an overlay reflecting the type of colour target selected.

1) Select target type

Out of the box we currently support ColorChecker, ColorChecker SG and ColorChecker DC targets. You can also use the + button to add your own target references.

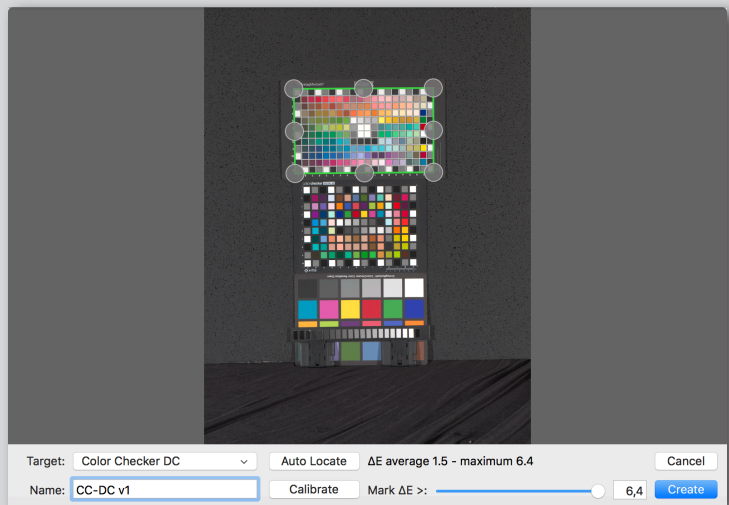
2) Align target location

While you can make a manual adjustment of the overlay indicating target position, normally you will just have to press the Auto Locate button and your target will be automatically located.



3) Calibrate

Press Calibrate to perform the actual calibration. If this is successful you will get basic ΔE statistics (CIEDE2000). Using the Mark ΔE > slider you will get feedback in the image showing patches that deviate by more than the selected ΔE value.

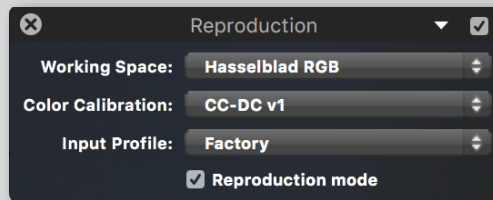


4) Create the calibration

Once you're happy with the calibration result the actual calibration is stored by clicking the Create button and you will return to the base interface of the **Colour Calibrations** dialog showing you the list of existing calibrations. Here you will also be able to enter a text description of each calibration.

5) Using the calibration

To use the new custom colour calibration, select it in the **Colour calibration** pop up menu in the reproduction tool. The calibration itself will be embedded in the 3F file along with the other adjustment settings so there is no need to move the stored calibrations between host computers. If you view an image containing a colour calibration that is not already stored locally it will be automatically copied to the computer.



KEYBOARD SHORTCUTS

Print the relevant list for your platform and keep it handy for quick reference.

You can temporarily tape it to the side of your monitor until you are more familiar with the shortcuts.

phocus [®]	MAC	
Preferences	⌘ + ,	Phocus
Hide Phocus	⌘ + H	
Hide Others	⌘ + ⌘ + H	
Quit Phocus	⌘ + Q	
Capture	⌘ + N	File
Close	⌘ + W	
Export	⌘ + S	
Export as Previous	⌘ + ⌘ + S	
Import	⌘ + ⌘ + I	
Modify	⌘ + ⌘ + M	Edit
Print	⌘ + P	
Move to Trash	⌘ + ⌘	
Undo	⌘ + Z	
Redo	⌘ + ⌘ + Z	
Cut	⌘ + X	Image
Copy	⌘ + C	
Paste	⌘ + V	
Select All	⌘ + A	
Deselect All	⌘ + ⌘ + A	
Add/Remove from Quick Collection	⌘ + B	Image
Remove Crop	⌘ + D	
Save Adjustments	⌘ + ⌘ + S	
Reload Adjustments	⌘ + ⌘ + R	
Use Last Saved Adjustments	⌘ + ⌘ + U	
Map	⌘ + ⌘ + M	View
Slideshow	⌘ + ⌘ + L	
Grid	⌘ + ⌘ + G	
Grid Options	⌘ + ⌘ + G	
Overlay	⌘ + ⌘ + O	
Overlay Options	⌘ + ⌘ + O	View
Shadow warning	⌘ + ⌘ + ⌘ + S	
Highlight warning	⌘ + ⌘ + H	
Warning Options	⌘ + ⌘ + W	
Readout Points	⌘ + ⌘ + R	
Next Image	→	
Previous Image	←	
Compare Image	⌘ + ⌘ + C	
Zoom In	⌘ + +	
Zoom Out	⌘ + -	
Fit to Window	⌘ + O	
Zoom to 100%	⌘ + ⌘ + O	
Larger Thumbnails	⌘ + ⌘ + +	
Smaller Thumbnails	⌘ + ⌘ + -	
Fit Thumbnails	⌘ + ⌘ + O	
Live Video	⌘ + L	
Live Video Audio Feedback	⌘ + ⌘ + ⌘ + A	
Show New Captures in Viewer	⌘ + ⌘ + ⌘ + C	
Minimize	⌘ + M	Window
Show/Hide Tools	⌘ + ⌘ + T	
Show/Hide Browser	⌘ + ⌘ + B	
Show/Hide Thumbnails	⌘ + ⌘ + N	
Show/Hide Viewer	⌘ + ⌘ + V	
Viewer in Separate Window	⌘ + ⌘ + ⌘ + V	
Full Screen Viewer	⌘ + ⌘ + F	
Layout: Standard	⌘ + ⌘ + 1	
Layout: Browse	⌘ + ⌘ + 2	
Layout: Viewer	⌘ + ⌘ + 3	
Layout: Thumbnails only	⌘ + ⌘ + 4	
Tool Set: Capture	⌘ + 1	
Tool Set: Browse	⌘ + 2	
Tool Set: Adjust	⌘ + 3	
Tool Set: Export	⌘ + 4	
Crop tool	c	Tools
Dust removal tool	d	
Hand tool	h	
Color picker tool	i	
Loupe (Navigator tool)	l	
Neutralization tool	n	
Straighten tool	r	
Compare view	w	
Zoom tool	z	
Drag overlay	Alt + drag	
Single-shot capture	F5	
Multi-shot capture	F6	

HASSELBLAD

phocus [®]	WIN	
Capture	Ctrl + N	File
Close window or application	(Alt + F4)	
Export	Ctrl + S	
Export as Previous	Ctrl + ⌘ + E	
Import	Ctrl + I	
Modify	Ctrl + M	Edit
Print	Ctrl + P	
Exit	(Alt + F4)	
Undo	Ctrl + Z	
Redo	Ctrl + Y	
Cut	Ctrl + X	Image
Copy	Ctrl + C	
Paste	Ctrl + V	
Find	Ctrl + F	
Select All	Ctrl + A	
Deselect All	Ctrl + ⌘ + A	Image
Add/Remove from Quick Collection	Ctrl + B	
Remove Crop	Ctrl + ⌘ + D	
Save Adjustments	Ctrl + ⌘ + S	
Reload Adjustments	Ctrl + ⌘ + R	
Use Last Saved Adjustments	Ctrl + ⌘ + U	View
Map	Ctrl + ⌘ + M	
Slideshow	Ctrl + ⌘ + L	
Grid	Ctrl + G	
Grid Options	Ctrl + ⌘ + G	
Overlay	Ctrl + O	View
Overlay Options	Ctrl + ⌘ + O	
Shadow warning	Ctrl + D	
Highlight warning	Ctrl + H	
Warning Options	Ctrl + W	
Next Image	Ctrl + →	
Previous Image	Ctrl + ←	
Zoom In	Ctrl + +	
Zoom Out	Ctrl + -	
Fit to Window	Ctrl + O	
Zoom to 100%	Ctrl + Alt + O	
Larger Thumbnails	Ctrl + ⌘ + +	
Smaller Thumbnails	Ctrl + ⌘ + -	
Live Video	Ctrl + L	
Live Video Audio Feedback	Ctrl + ⌘ + A	
Show/Hide Tools	Ctrl + ⌘ + T	Window
Show/Hide Browser	Ctrl + ⌘ + B	
Show/Hide Thumbnails	Ctrl + ⌘ + N	
Show/Hide Viewer	Ctrl + ⌘ + V	
Viewer in Separate Window	Ctrl + Alt + ⌘ + V	
Full Screen Viewer	Ctrl + ⌘ + F	
Toggle Portrait/Landscape	Ctrl + T	
Layout: Standard	Ctrl + ⌘ + 1	
Layout: Browse	Ctrl + ⌘ + 2	
Layout: Viewer	Ctrl + ⌘ + 3	
Layout: Thumbnails only	Ctrl + ⌘ + 4	
Layout: Light Mode	Ctrl + ⌘ + 5	
Layout: Standard Mode	Ctrl + ⌘ + 6	
Tool Set: Capture	Ctrl + 1	
Tool Set: Browse	Ctrl + 2	
Tool Set: Adjust	Ctrl + 3	
Tool Set: Export	Ctrl + 4	
Crop tool	c	Tools
Dust removal tool	d	
Hand tool	h	
Color picker tool	i	
Loupe (Navigator tool)	l	
Neutralization tool	n	
Straighten tool	r	
Compare view	w	
Zoom tool	z	
Drag overlay	Option + drag	
Single-shot capture	F5	
Multi-shot capture	F6	
Minimize Phocus	Alt + space + m	

HASSELBLAD

Frequently Asked Questions

Q. I have downloaded Phocus but it won't launch!

- A. Check that both your computer and operating system are compatible with Phocus. You can find this information in the Read Me file that follows each version of Phocus.

Q. Where can I get the latest version of Phocus?

- A. You can download the latest version via our web page—www.hasselblad.com—under the *Downloads > Software* section (Log-In required)

Q. How do I add my adjustments to a number of images?

- A. Firstly, select the images you want to modify, then click the *Modify* icon in the *Toolbar*. A dialog opens allowing you to select the desired settings that you have set in *Tools*. Click *Modify* to affirm.

Q. How do I get my exported images to open in my preferred image editing software?

- A. You can choose an image editor in the *Preferences* menu (*Toolbar > Preferences > Image Editor*). Selected images will then open automatically, when double-clicked in the *Queue*, in the chosen software.

Q. Why are there 3FR and 3F files? Why can't captures be saved directly as 3F files?

- A. 3FR files consist of native Hasselblad raw data that contains a huge amount of information, particularly when compared to 35mm digital files. This is essential to produce the level of quality expected from Hasselblad products. It follows that a good deal of computing power is required to extract the maximum in the shortest possible time. To avoid diverting the camera's activities to image processing, the combined advantages of Phocus and a workstation are used instead. 3FR files are then processed into a complete and workable raw format that can be saved, adjusted and exported, namely, 3F.

Q. What's the difference between 3FR and 3F files? Should I keep them all?

- A. A 3FR file is the native raw file created by Hasselblad cameras and remains in that format when stored on a CF card. When loaded into Phocus, however, various corrections take place based on the hardware configuration of the camera used. This processes the 3FR file into a 3F format file and creates a high quality preview (size according to settings in Preferences). As this is an improved and specifically-tuned file, the original 3FR file can be discarded. You may, of course, export 3F files to TIFF, PSD, JPEG etc., and just keep those but if you have the space, retaining the 3F files could be good insurance to be able to re-process sometime in the future.

Q. Why does it take a while to see the Viewer image in Phocus? It seems much faster with other programmes.

- A. In contrast to some other programmes, Phocus produces a full image in the *Viewer*, not a quick low-resolution version. What you see is what you will get (if your monitor is capable of showing it). Hasselblad files are naturally very large and demand a good deal of processing power so you will also see differences in speed on different platforms/configurations. See the *Read Me* files for more information about performance.

Q. I want to save time. What are the disadvantages of exporting Hasselblad captures directly from the browser?

A. Exporting 3FR or 3F files directly generates files that exclude the complete set of advantageous adjustments such as white balance, lens corrections, moire, etc. However, this might be acceptable for a rushed set of 'contact sheets' for a waiting client. As long as the 3FR/3F files are retained, you can always go back and export a selection, this time with the full benefits that Phocus offers for optimum quality.

Q. Is there a way to access frequently used folders in an easy way in Phocus?

A. You can use the *Favorites* section in the *File Browser*. Drag selected folders to just beneath the *Favorites* heading to make a collection.

Q. How do I get an overview of the keyboard shortcuts used in Phocus?

A. There is a keyboard shortcut list in this user manual. Print it out and keep it handy for quick reference or you can tape it onto the side of your computer screen.

Q. Will 3F files generated by Phocus be backwards compatible with FlexColor?

A. No, you will not be able to open 3F files generated by Phocus in FlexColor. 3F camera files generated by FlexColor will however be compatible with Phocus.

Q. My thumbnail image does not reflect changes made to the image in the Viewer.

A. The thumbnail image will not reflect changes until you click the *Save Changes* button (*Toolbar > Adjustments > Save Changes button*). See *Adjustment* section in this user manual for further information.

Q. How do I get crops to show up on my thumbnail images?

A. Click on the icon in the upper right corner of the thumbnail browser to open the menu. Check the *Show Crop* box, make the crop and choose *Toolbar > Adjustments > Save Changes*.

Q. I exported some 3FR files directly to TIFF but I forgot to turn off the tool settings I had for a previous batch of files. Have those TIFF's now been adjusted according to the current Phocus settings?

A. No. Phocus uses the *Standard* setting for such direct export and so no individual tool settings have been applied.

For more FAQ information please check our online FAQ on:
www.hasselblad.com/service--support/technical-support/faq/phocus.aspx

These Tips & Tricks are freely available as downloads (English only) from:
www.hasselblad.com/downloads/tips--tricks-pdf%C2%B4s-/phocus-tips.aspx

Adjustments Browser tip - Part 1

Adjustments can be created quickly and easily within the Adjustment Browser. Create your own adjustments by following these steps.

Phocus Adjustments Browser tip - Part 2

Phocus Adjustments Browser tip - Part 3

Color Exposure

Phocus has a very simple, but powerful Color Correction tool. Rather like selective color in Photoshop it allows you to target a color and make specific changes to that color based on an expandable range.

Cropping

Cropping in Phocus is achieved by using the crop tool along with the "Crop and Orientation" tool and the "Output Preview Tool"

Dust Removal

The Dust Removal tool is designed to quickly remove spots caused by dust particles on the sensor.

Job Info

Setting up for a Tethered Shoot. The Job Info tool in Phocus is the one stop place to ensure everything is in place for a tethered capture session.

Keywords

Keywording provides a simple yet powerful keywording interface, based on IPTC standards. (www.iptc.org)

Layouts

Working with Layouts allows you to customise the workspace to your own preferences.

Navigator Tool

The Navigator tool can be used in several ways providing not only a navigation function but also a loupe function.

Output Presets

Output presets are useful when when outputting a file.

Overlay

Phocus has an advanced overlay function to help you create an image to strict guidelines as perhaps supplied by an Art Director.

Phocus Mobile

Phocus Mobile is a remote application designed to work with Phocus (currently Mac only). Phocus Mobile allows remote control of your HD system, rating of images and remote viewing. Phocus Mobile is available free from the Apple App Store.

Printing

Use the options for controlling print output directly. Full size images can be printed as well as Contact Sheets.

Quick Modify

Changing One Tool Setting on Multiple Images While the toolbar Modify function can be used to batch modify images with a variety of different tool settings, it is also possible to perform a quick modify with individual tools.

Remote Control

Access many of the commands on the camera via Phocus.

Right Click

There are many different places you can use a Right mouse click command or Ctrl-Click command. This often brings up contextual menus with short cuts.

Thumbnail Browser

The thumbnail browser has many options for customising the appearance to your own needs. Learn some of them here.

Tool Area

The tool area is where all the adjustment and information tools reside.

Toolbar

Change the layout and contents of the main toolbar.

Hasselblad TV includes several videos on various aspects of Phocus:
<http://htv.hasselblad.com/channel/education-training?page=1>

Index

Appendix	76		
Adjustments	63	Menu shortcuts	71
Adjustments Browser	43	Mobile	60
		Modify	57
Camera tool	43	Navigation	21
Camera Configurator	77	Navigator & Zoom	49
Capture Info	43	Next image	32
Capture Sequencer	43	Neutralization tool	30
Color Correction	43	Noise Filter	49
Collections	22		
Compare view	30	Output Preview	50
Connection	34	Overlay	31
Crop tool	30		
Crop & Orientation	44	Preferences	59
Curves	44	Presets - general	40
		Portrait/Landscape	61
Devices	22	Print	14, 57
Eizo Monitor Calibration	78	Queue	50
Export	15, 52	Quick collections	22
Export New Images Automatically	55		
Exposure	45	Reproduction	50
		Resizing thumbnails	24
Favorites	22	Resizing viewer	29
FAQ	82		
File Browser	21	Scene calibration	51
File Support	5	Shadow warning	31
File System	22	Sharpness	52
		Standard Mode - basic overview	12
Grayscale	45	Star rating	25
Grid	31	Switch compare images	32
Hand tool	31	Tabs	38
Highlight warning	31	Tabbed folders	26
Histogram	45	Tethered Capture	34
		Thumbnail badges	26, 27
IAA rating	25	Thumbnail Browser	24
IPTC Core	46	Tools	38
IPTC Keywords	46	Tool Area	38
Import & Export tips	56	Toolbar	53
Import	57	Tool presets	39
Integrated Color Calibration	79	Tool settings	38
		Triggers	59
Job Info	46		
		Selection	26
Keyboard shortcuts	81	Slideshow	13
Keywords	47, 48	Straighten tool	30
Layout	21, 24	Viewer	29
Layout overview	17	Viewer Toolbar	30
Layout options on Toolbar	61		
Lens Corrections	49	White Balance	52
Light Mode - overview	11		
Live Video	35	Zoom tool	30

The information in this manual is furnished for informational use only, is subject to change without notice, and should not be construed as a commitment by Victor Hasselblad AB.

The text in this manual cannot be reprinted or reused without the express permission of Victor Hasselblad AB.

The images in this manual were taken by Claudio Napolitano, Kevin Then, Joe Drivas, among others. They cannot be reprinted or reused without the express permission of the photographers who took them.

Victor Hasselblad AB assumes no responsibility or liability for any errors or inaccuracies that may appear in this manual.

Victor Hasselblad AB assumes no responsibility or liability for loss or damage incurred during or as a result of using Hasselblad software or products.

Hasselblad, Imacon, Ixpress, FlexColor and Phocus are trademarks of Victor Hasselblad AB. Adobe, Adobe Photoshop, Adobe Aperture and Adobe Lightroom are trademarks of Adobe Systems, Inc. Macintosh, Mac OS, Tiger, Leopard, FireWire and the Apple symbol are registered trademarks of Apple Computer, Inc. iPhone, iPad and iPod Touch are registered trademarks of Apple Computer, Inc.

*Copyright © 2016
Victor Hasselblad AB
All rights reserved.*

HASSELBLAD
CREATE TO INSPIRE

www.hasselblad.com